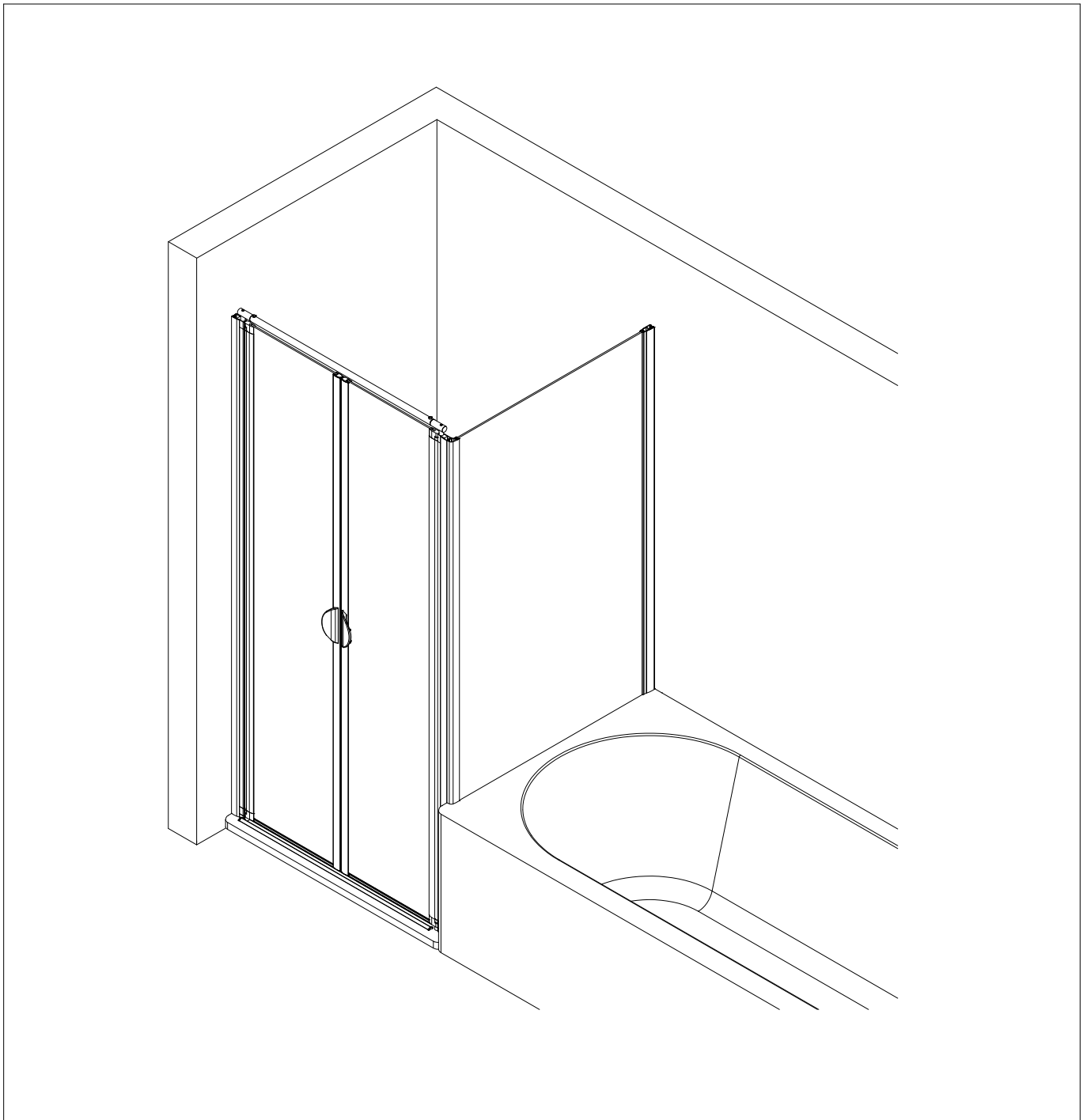
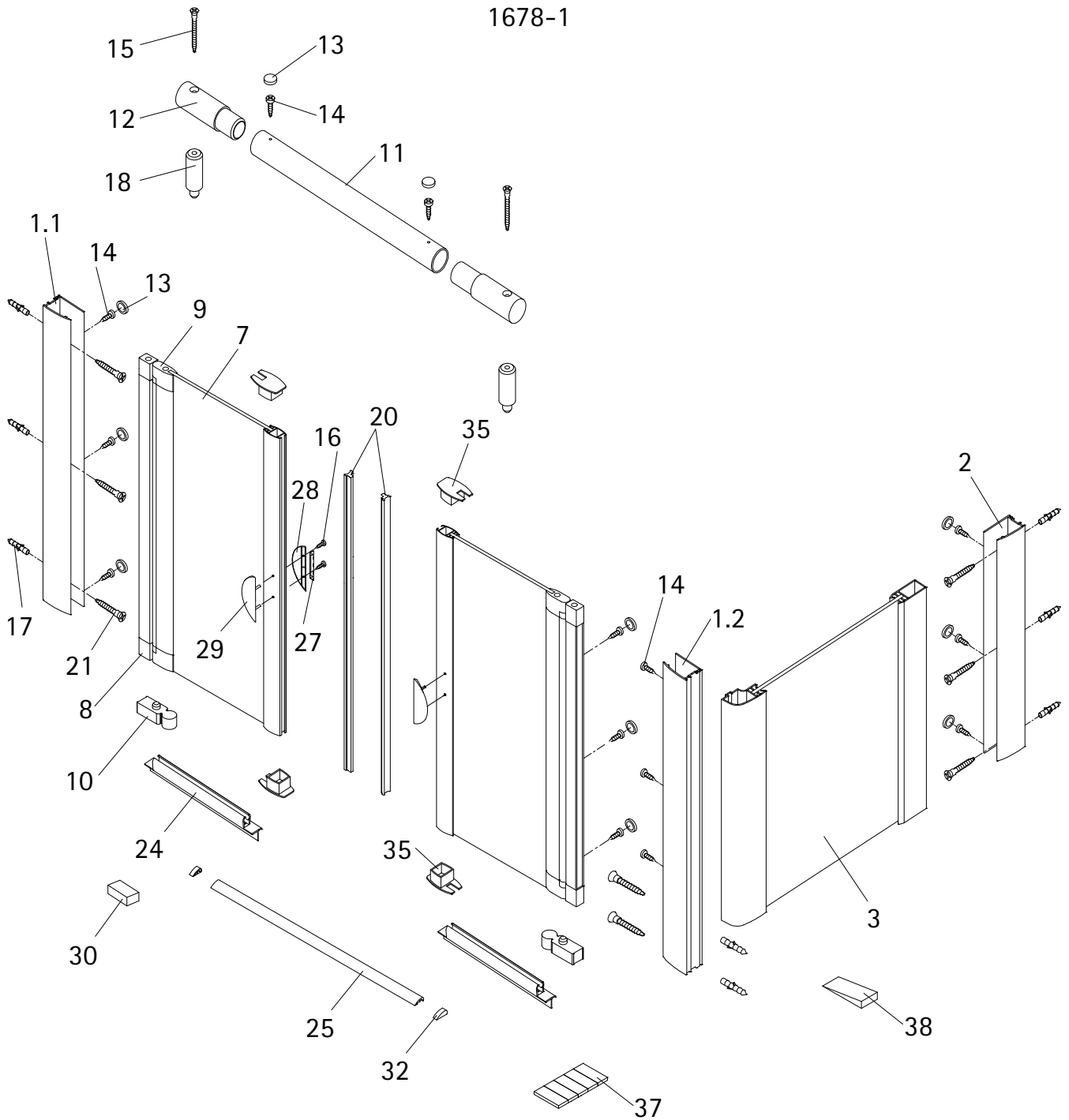


- Montageanleitung
- Assembly instructions
- Notice de montage
- Montagehandleiding
- Návod na montáž
- Instrucțiune de montaj
- Navodila za namestitev
- Installationstruktioener

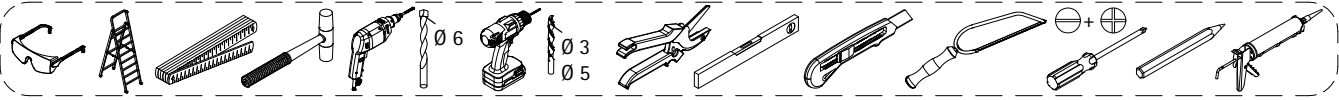
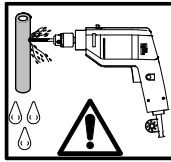
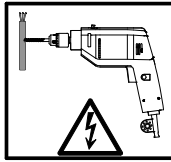
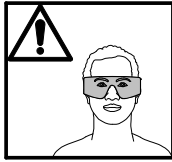
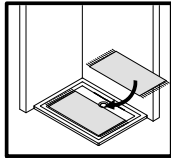
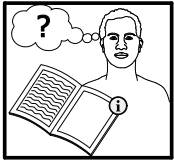


1678-1

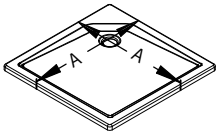
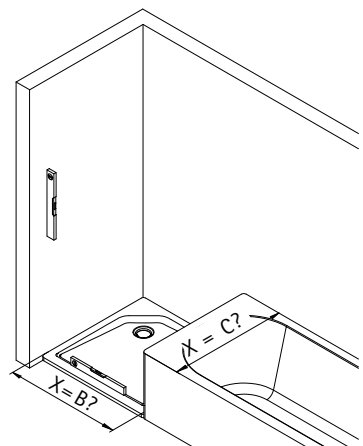
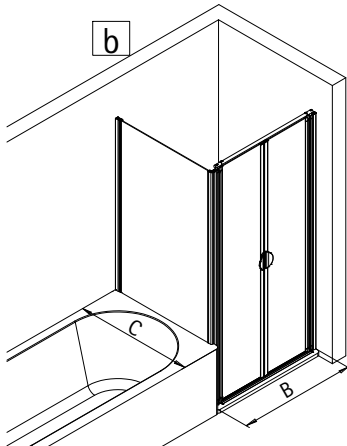
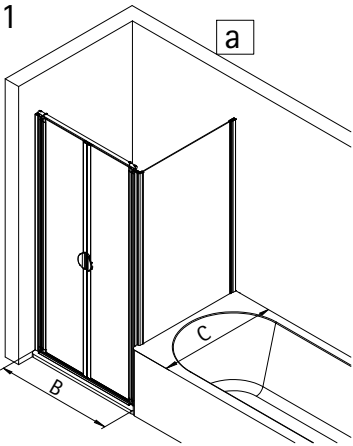


| Pos. | Bezeichnung | Ersatzteil-Nr. | Preis | Pos. | Bezeichnung | Ersatzteil-Nr. | Preis |
|------|-------------------------------------|----------------|---------------|------|--------------------------------------|----------------|---------------|
| 1.1 | 1 x Wandanschlussprofil | E 23230 | Stück 34,95 € | 17* | 8 x Dübel S6 | | |
| 1.2 | 1 x Wandanschlussprofil | E 23230 | Stück 34,95 € | 18 | 2 x Aufsatz | | |
| 2 | 1 x Wandanschlussprofil verkürzt | E 23230 | Stück 34,95 € | 20 | 2 x Magnetprofil | E 23056 | Paar 29,95 € |
| 3 | 1 x Seitenwand verkürzt | | | 21* | 8 x Linsen-Blechschaube 4,2 x 45 mm | | |
| 7 | 2 x Tür | | | 24 | 2 x Wasserabweisprofil | E 23058 | Stück 22,95 € |
| 8 | 4 x Drehlager | | | 25 | 1 x Wasserleiste (inkl. Pos. 32, 37) | E 23050 | Stück 27,95 € |
| 9 | 4 x Drehlager | } E 23080 | Stück 14,95 € | 27 | 2 x Griff Blende | } E 23140-15 | Stück 12,95 € |
| 10 | 2 x Unterlegteil | | | 28 | 2 x Griff innen | | |
| 11 | 1 x Rohr (inkl. Pos. 12, 18) | E 23330 | Stück 24,95 € | 29 | 2 x Griff außen | | |
| 12 | 2 x Verbinder | | | 30 | 2 x Montagehilfen | E 23201 | Stück 4,95 € |
| 13* | 11 x Abdeckkappe für Kappenschraube | | | 32 | 2 x Endkappe für Wasserleiste | | |
| 14* | 14 x Kappenschraube 3,5 x 9,5 mm | | | 35 | 4 x Endkappe Griffprofil | E 23208 | Stück 9,95 € |
| 15* | 2 x Senkkopfschraube 3,5 x 70 mm | | | 37 | 1 x Klebestreifen (5 Stk.) | | |
| 16* | 4 x Senkkopfschraube 3,5 x 25 mm | | | 38 | 1 x Silikonkeil | E 23203 | Set 13,95 € |

* Schrauben und Abdeckkappenset E 23200 22,95 €

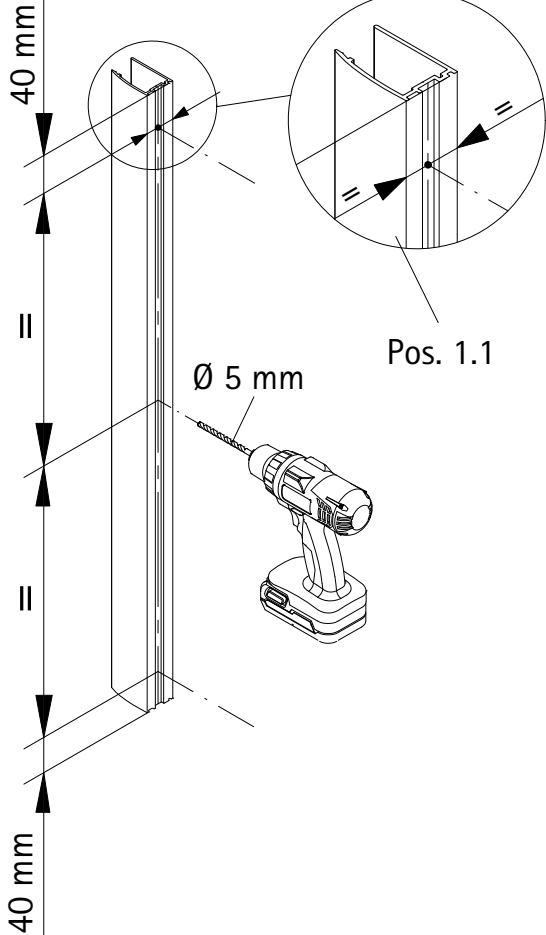


1

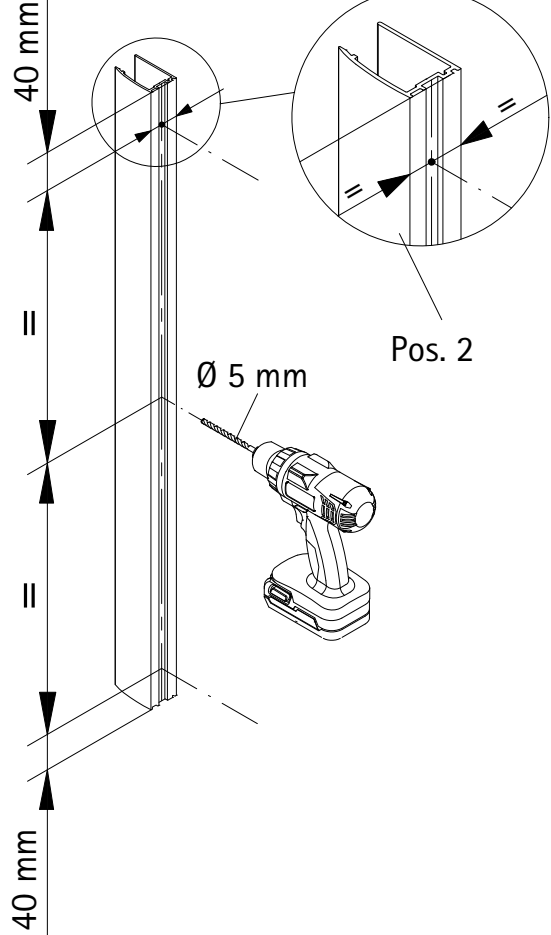


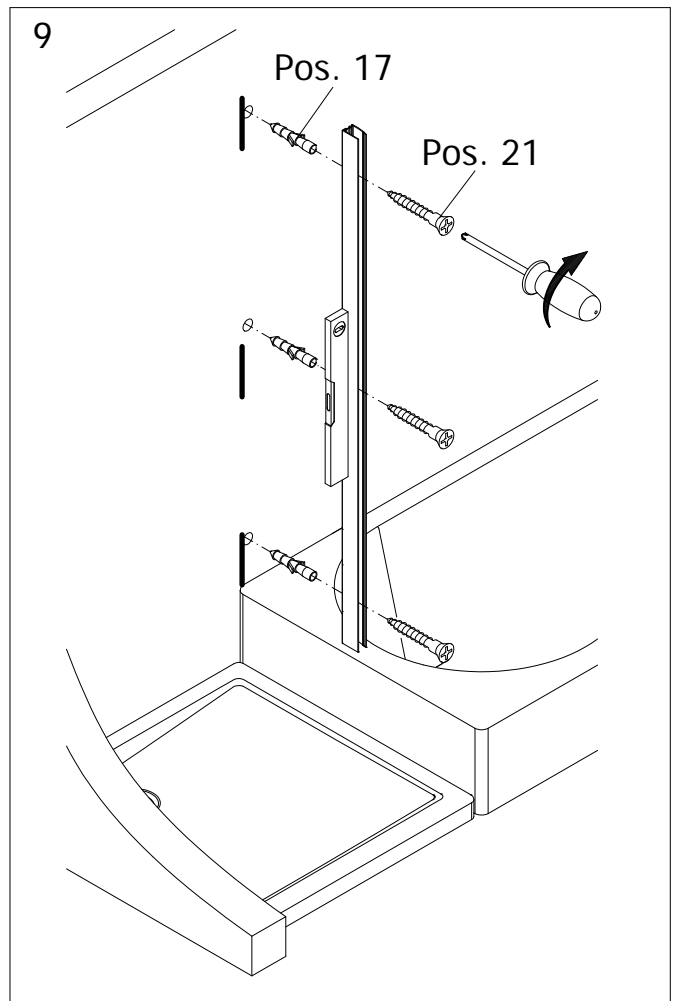
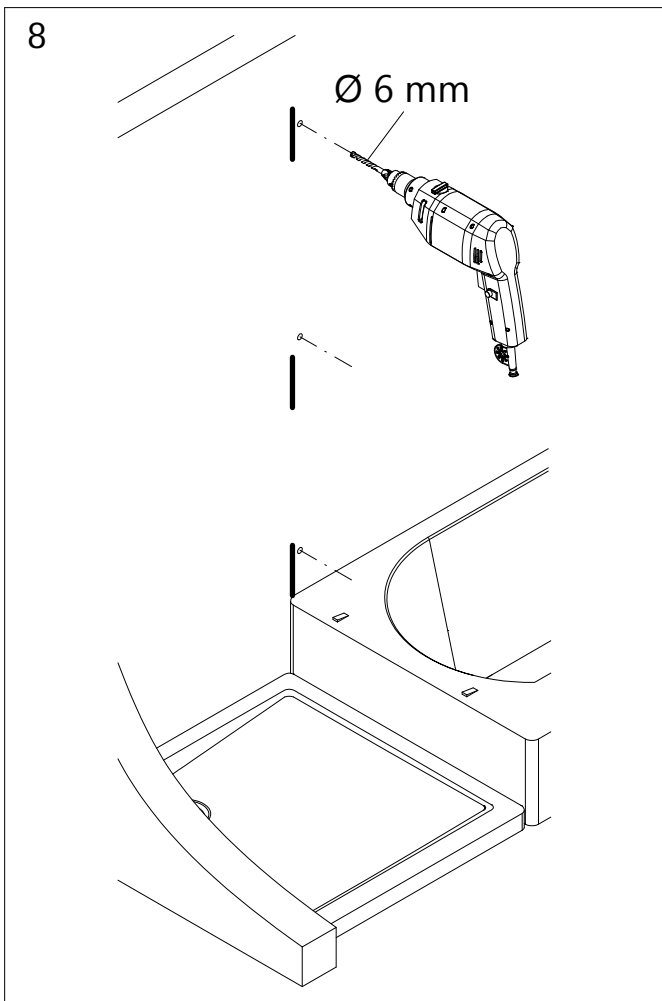
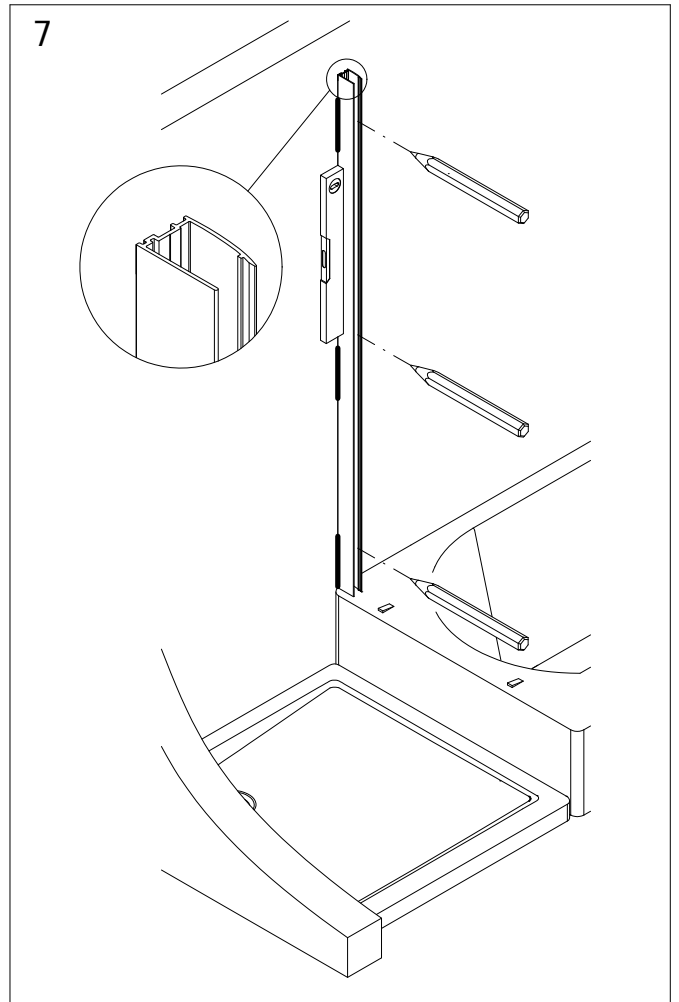
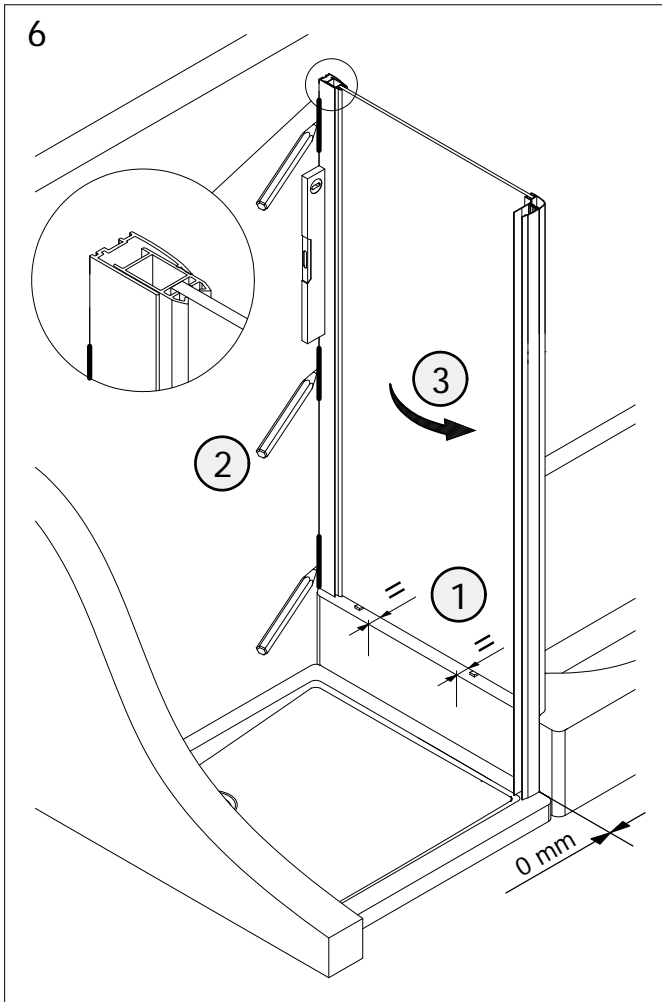
| A | B | C |
|--------|--------------|--------------|
| 750 mm | | 740 - 760 mm |
| 800 mm | 775 - 805 mm | |
| 900 mm | 875 - 905 mm | |

2

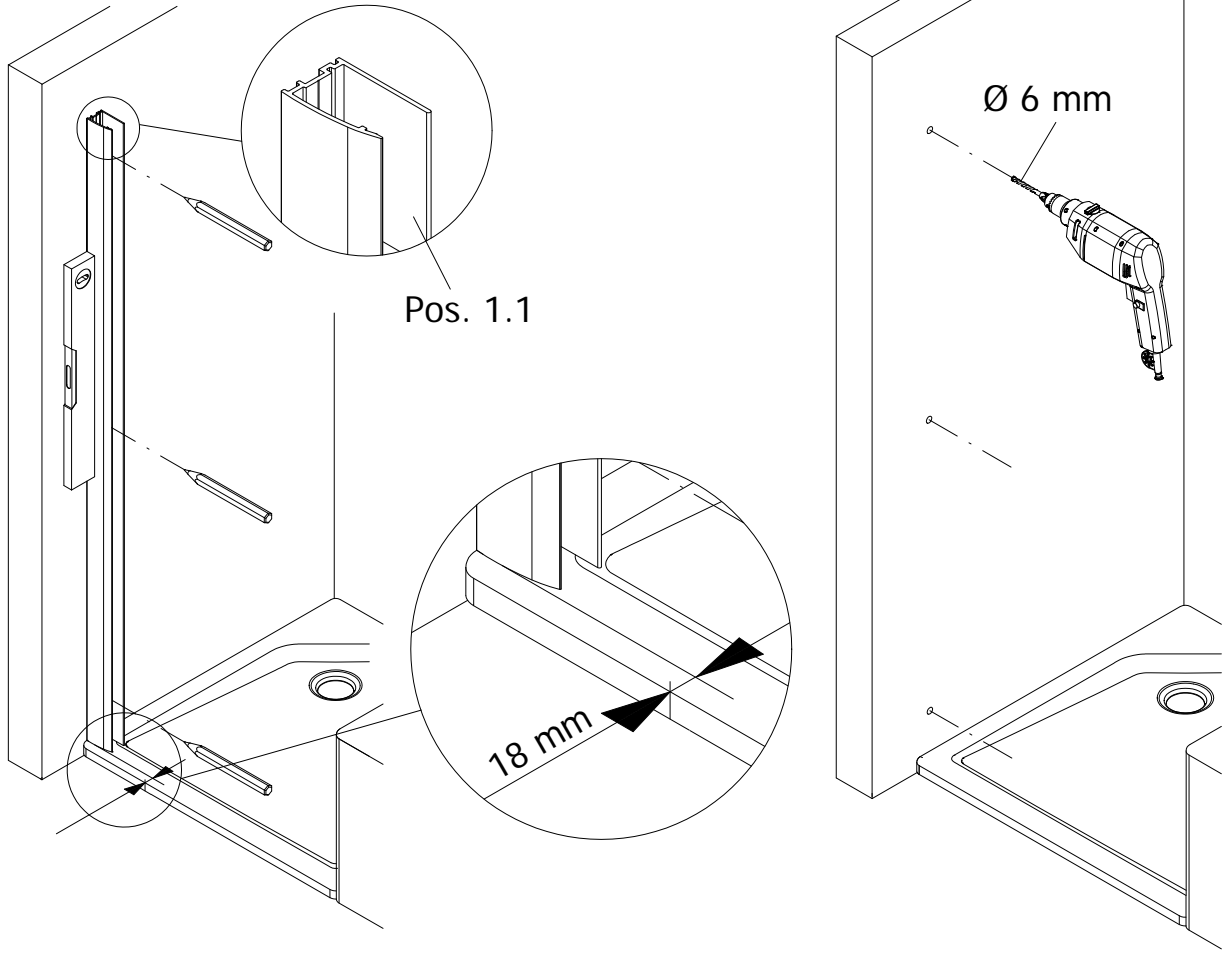


3

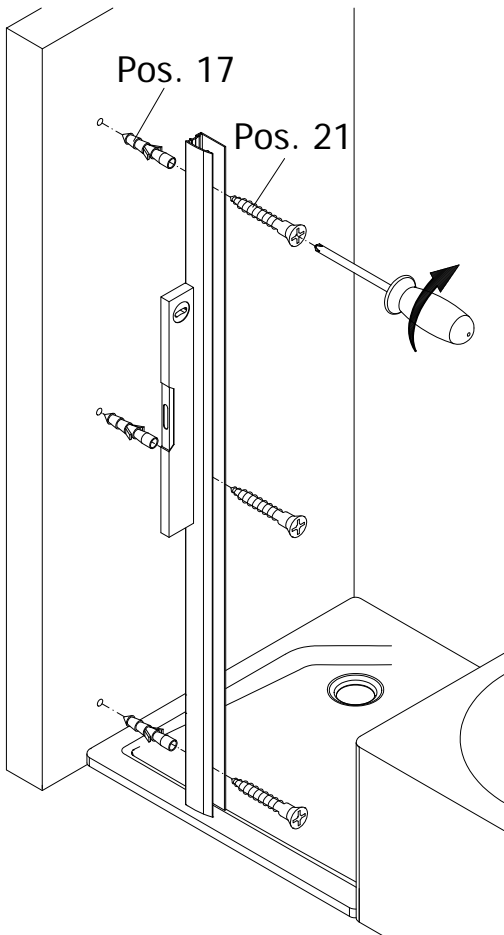




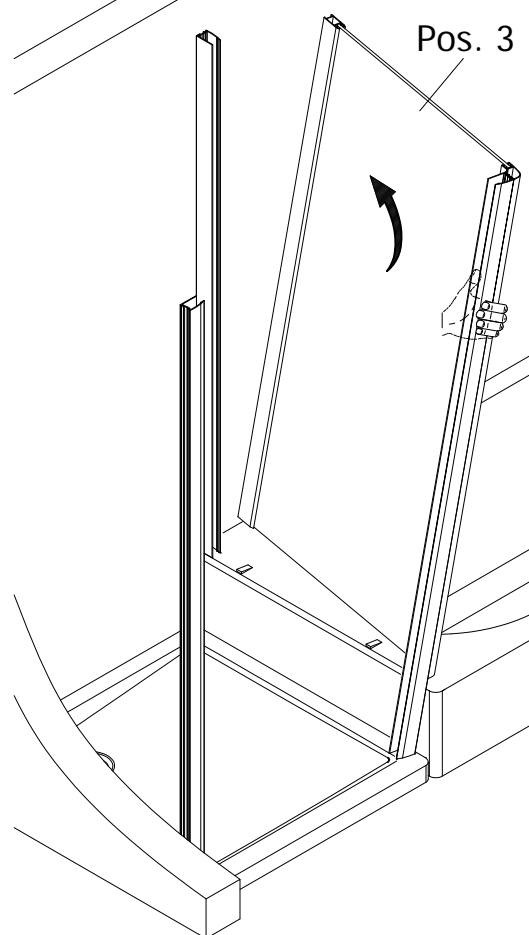
10



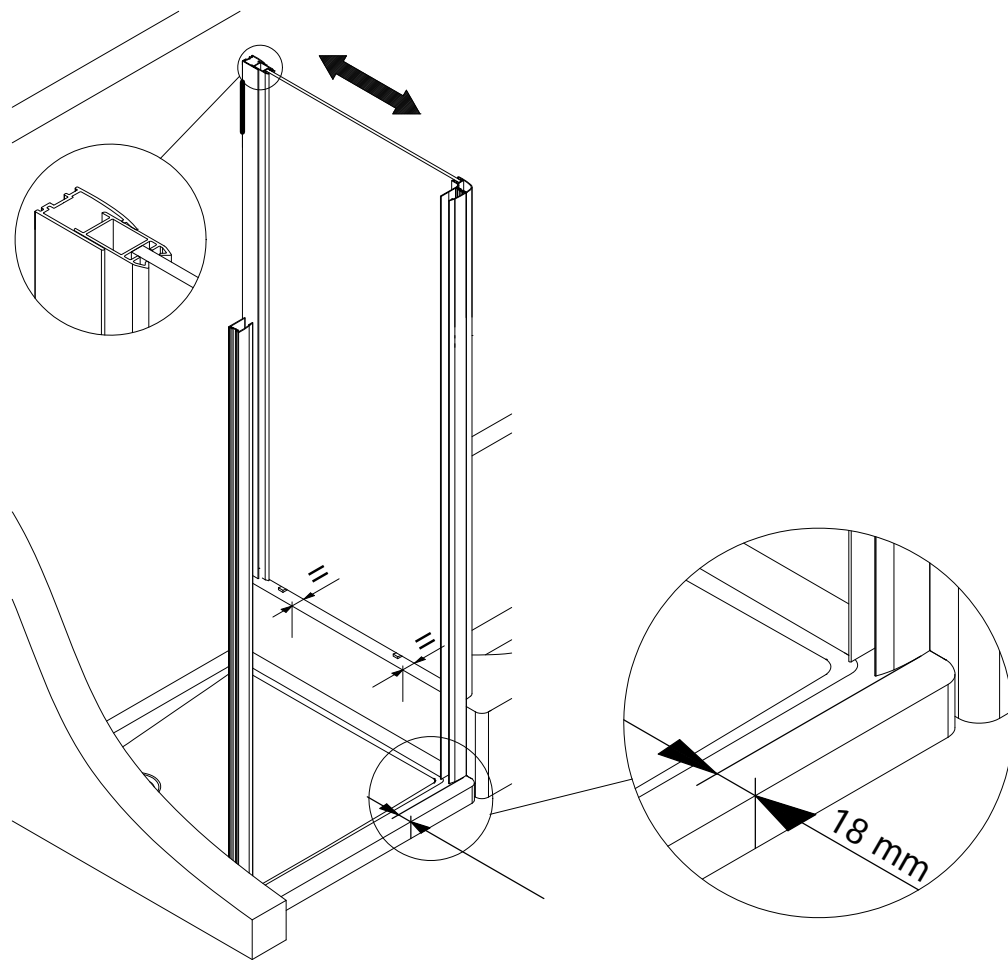
11



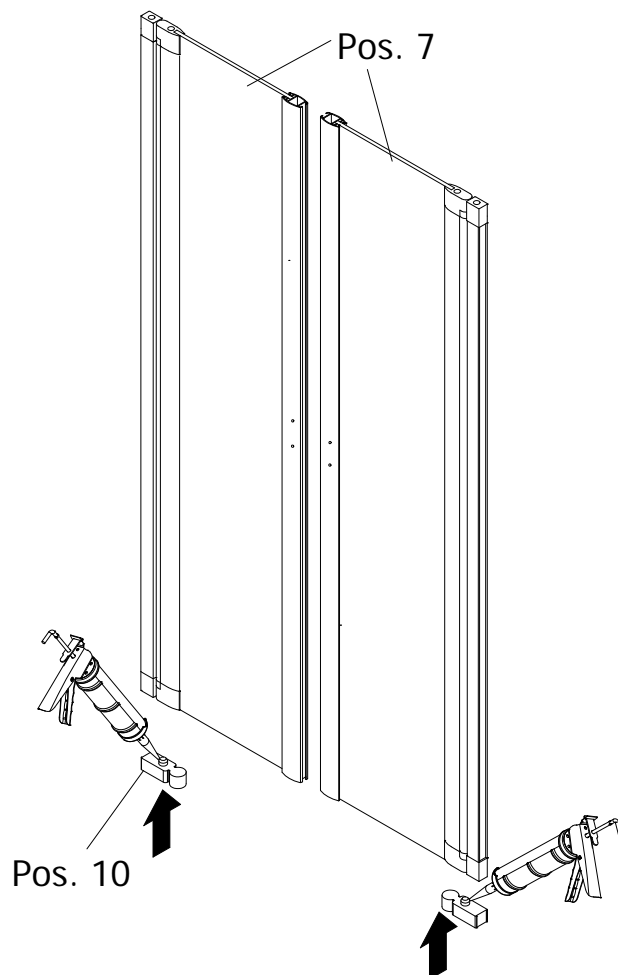
12



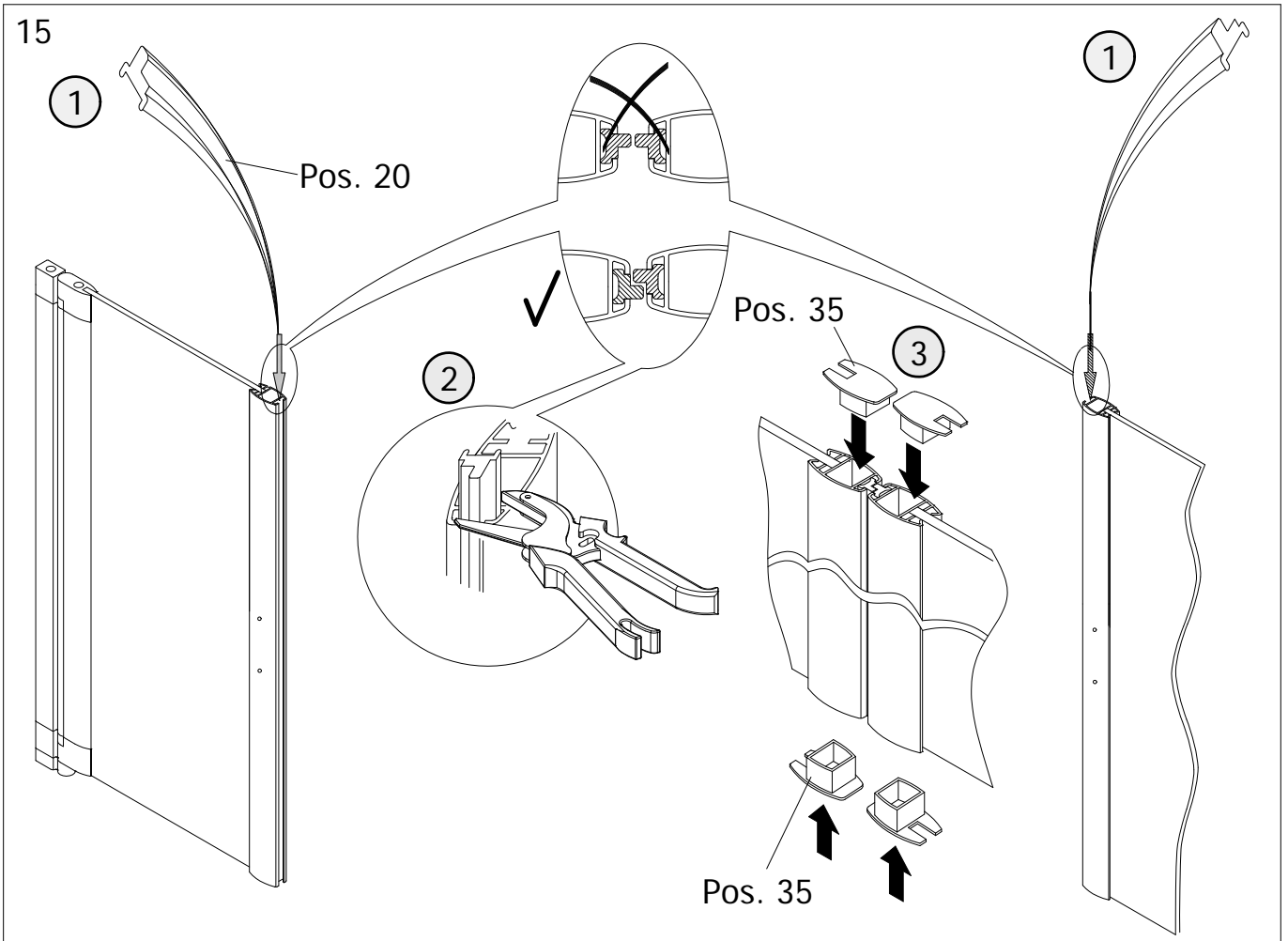
13



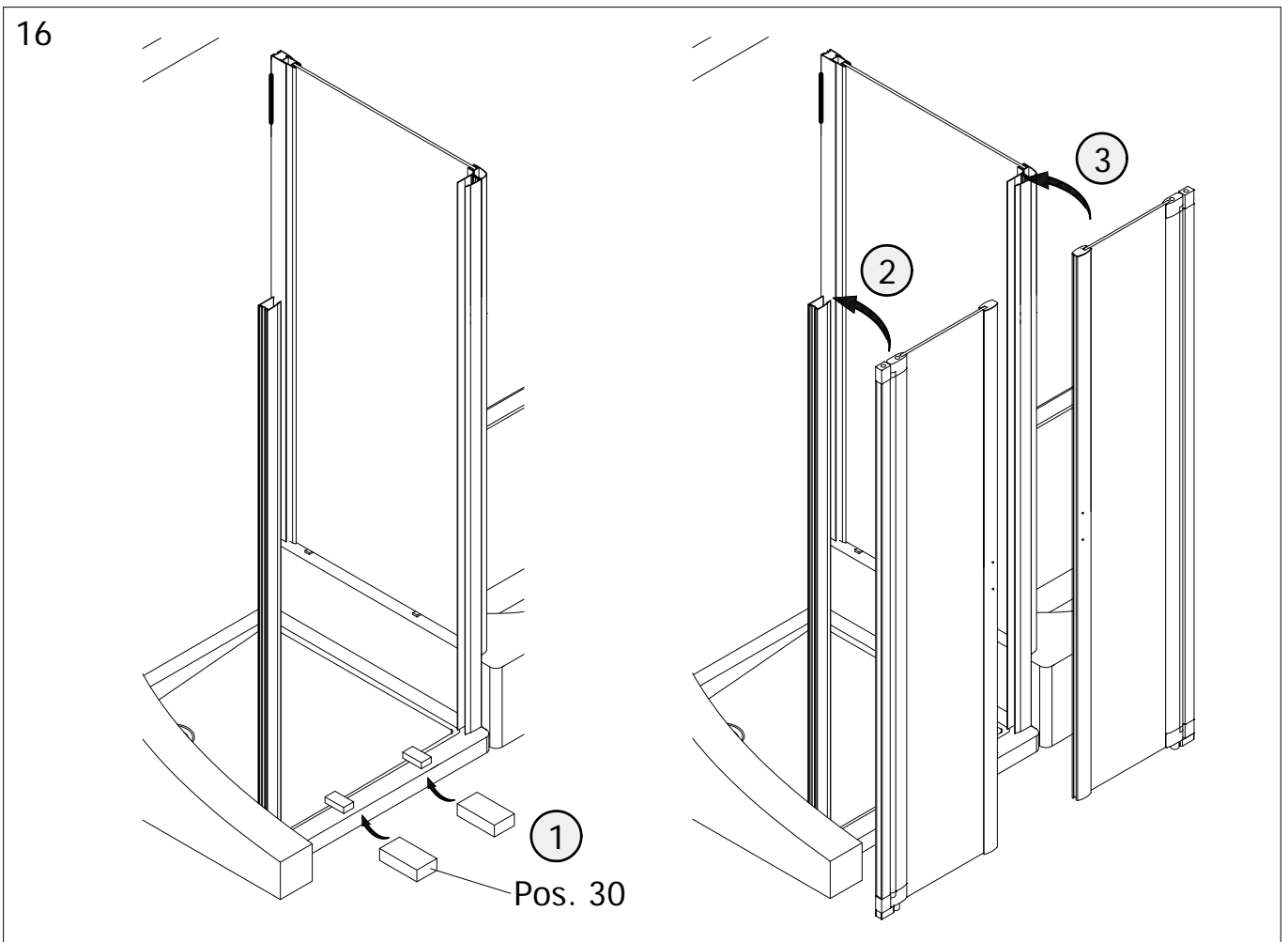
14



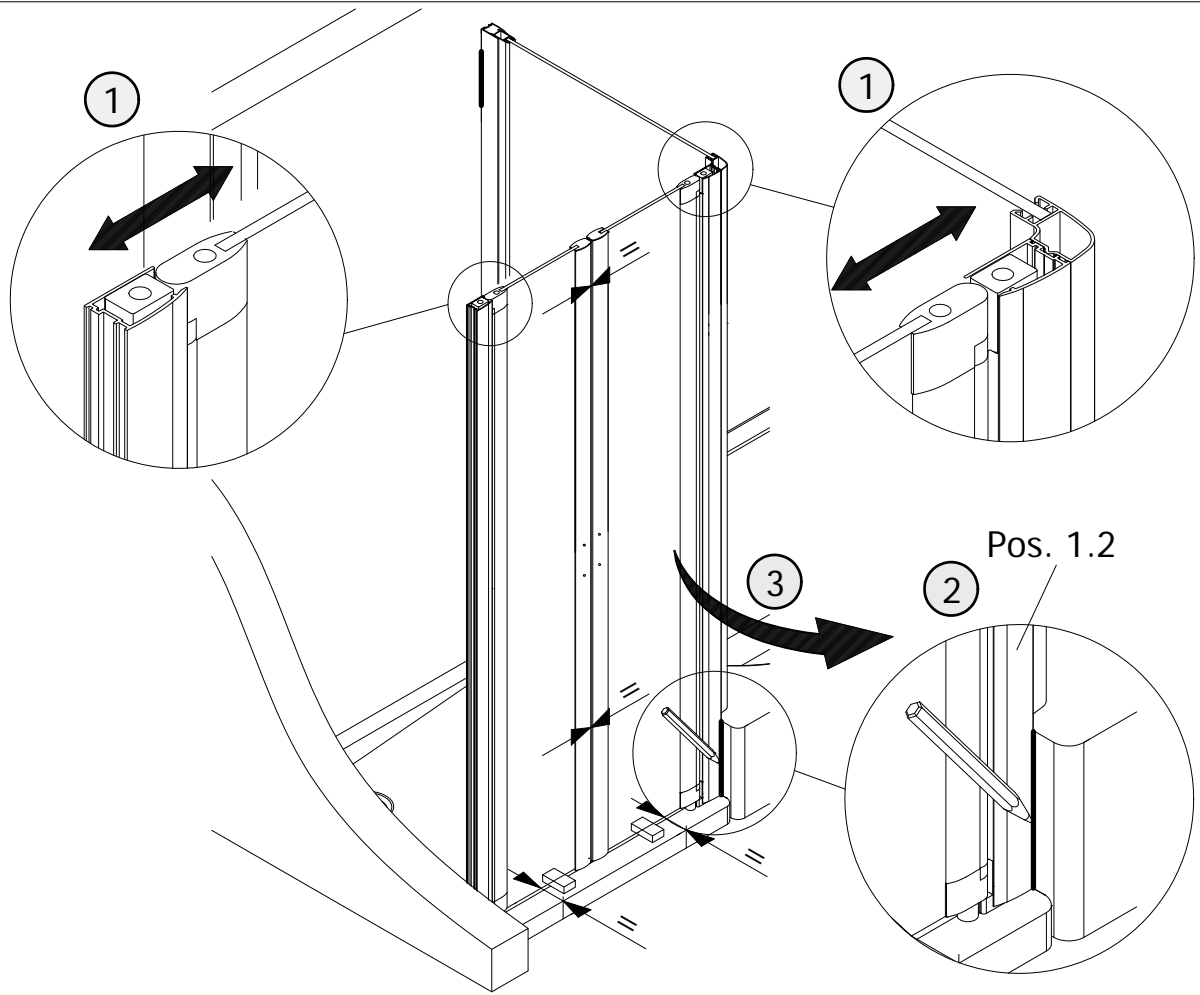
15



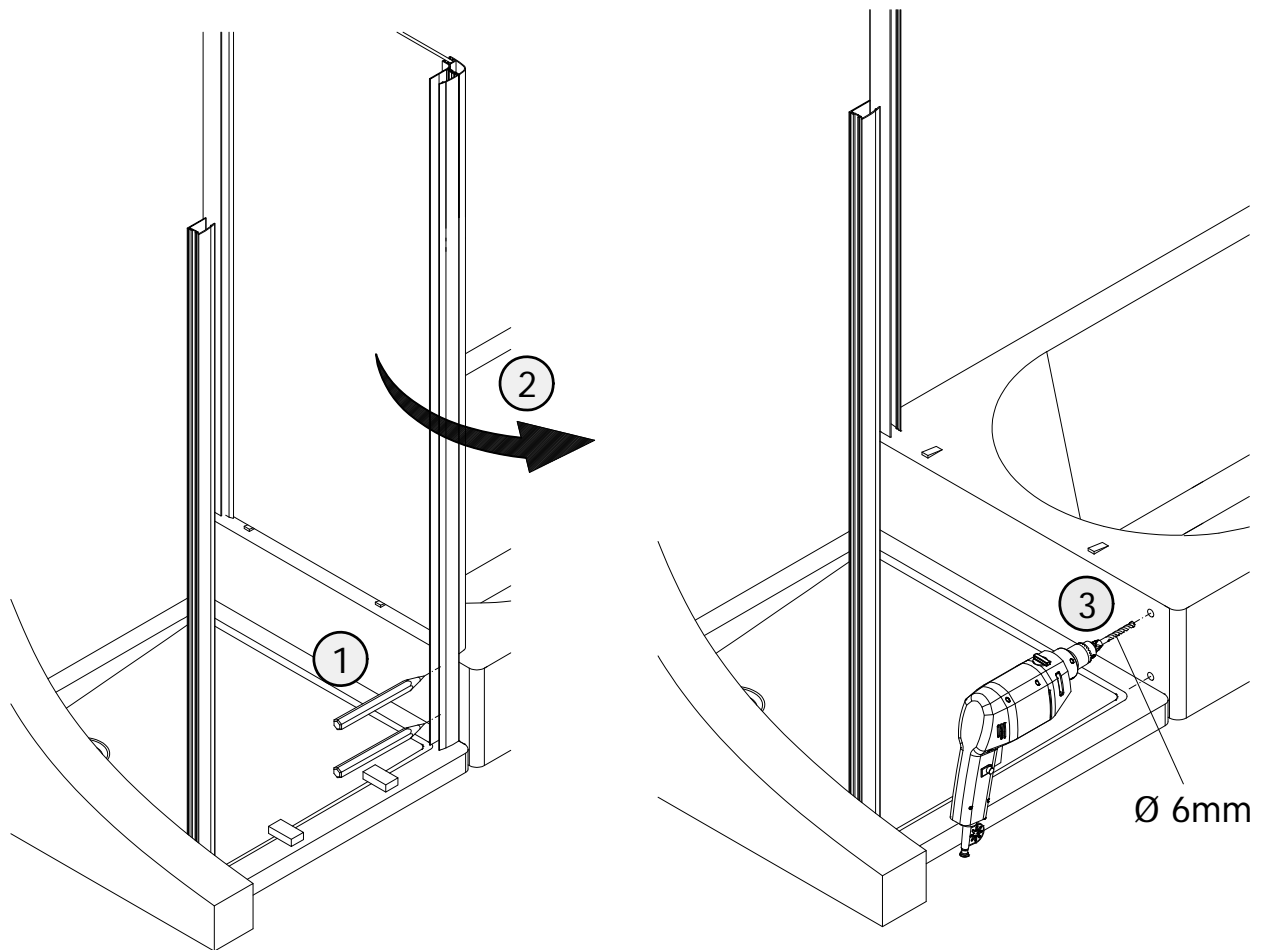
16



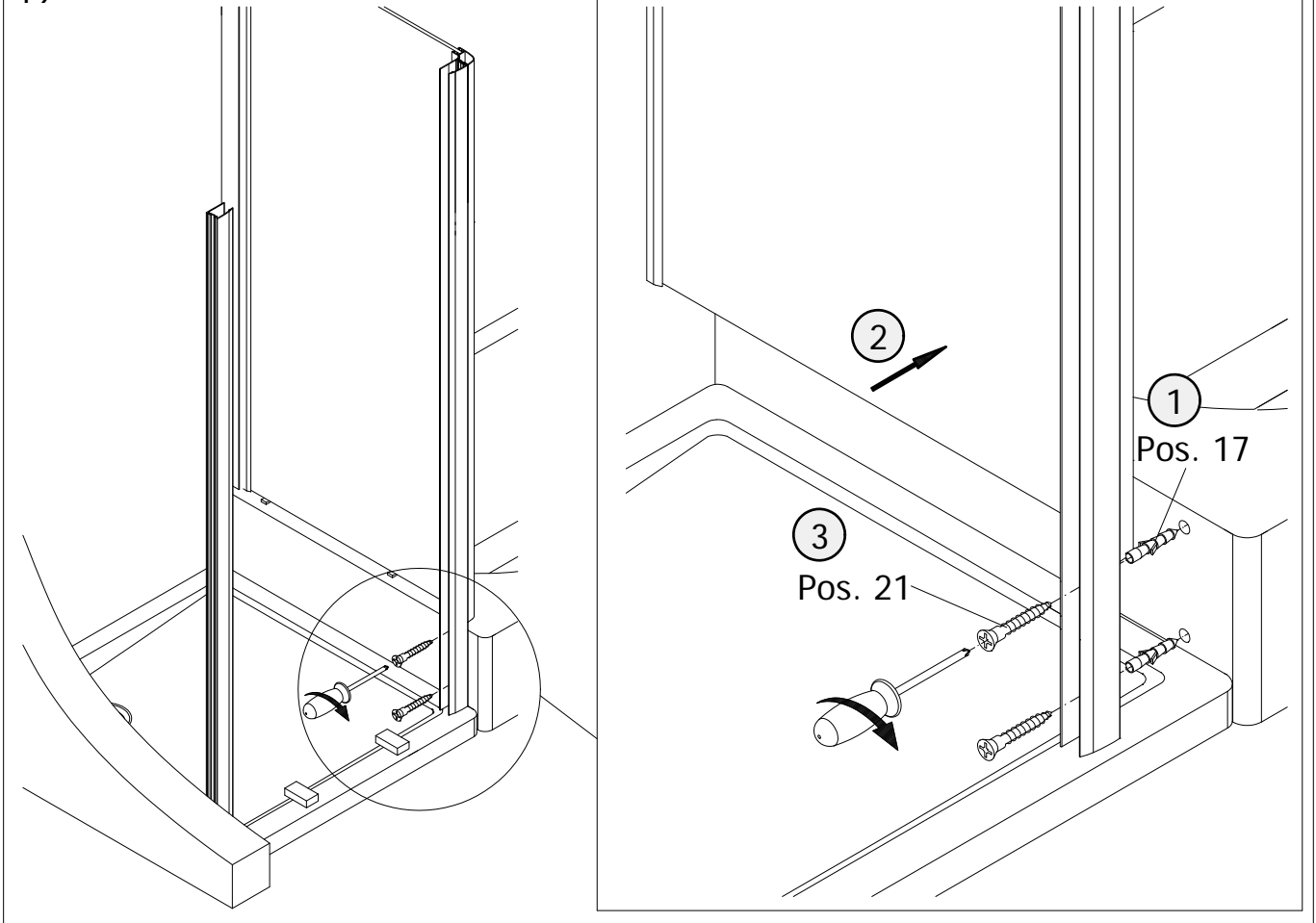
17



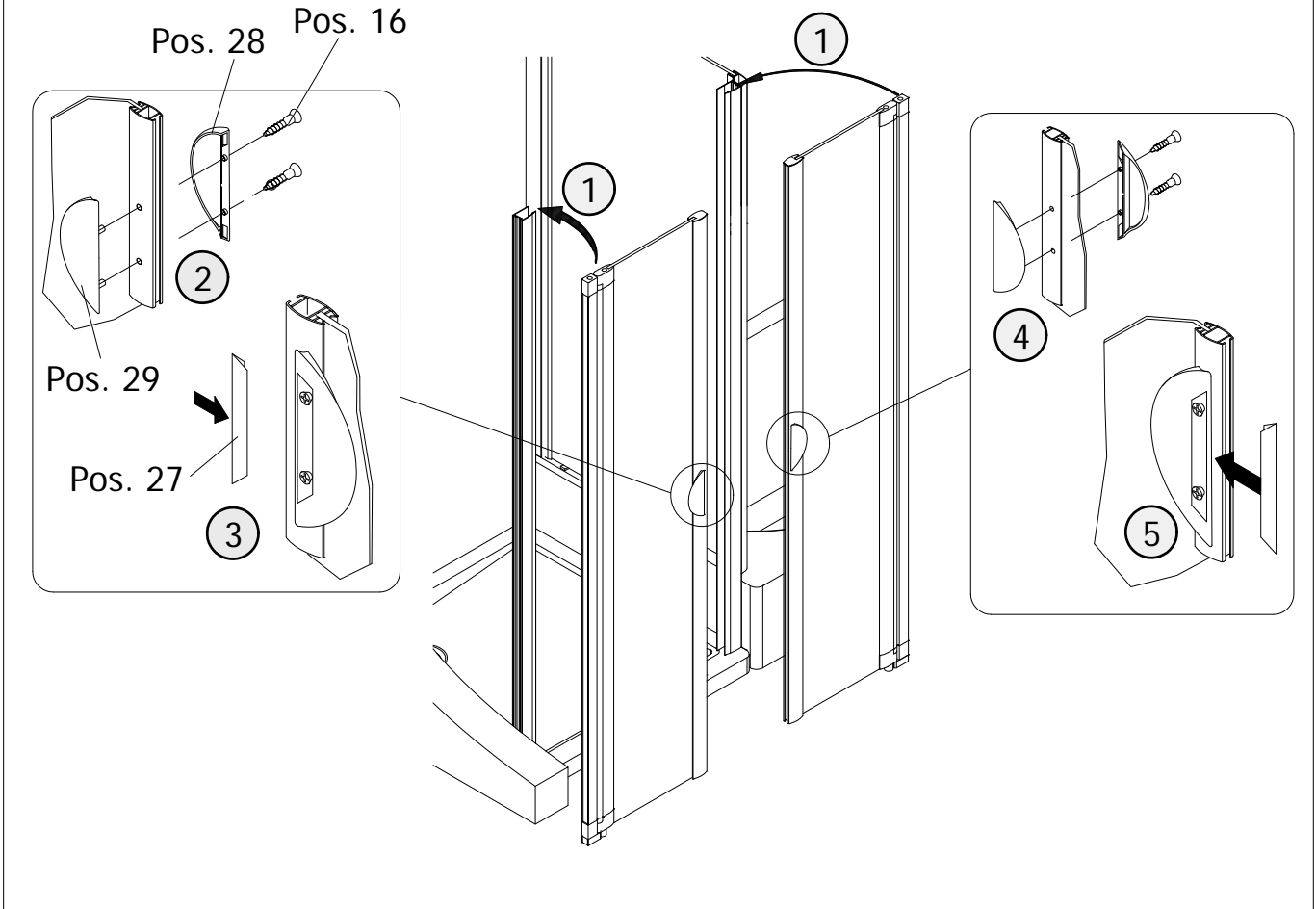
18



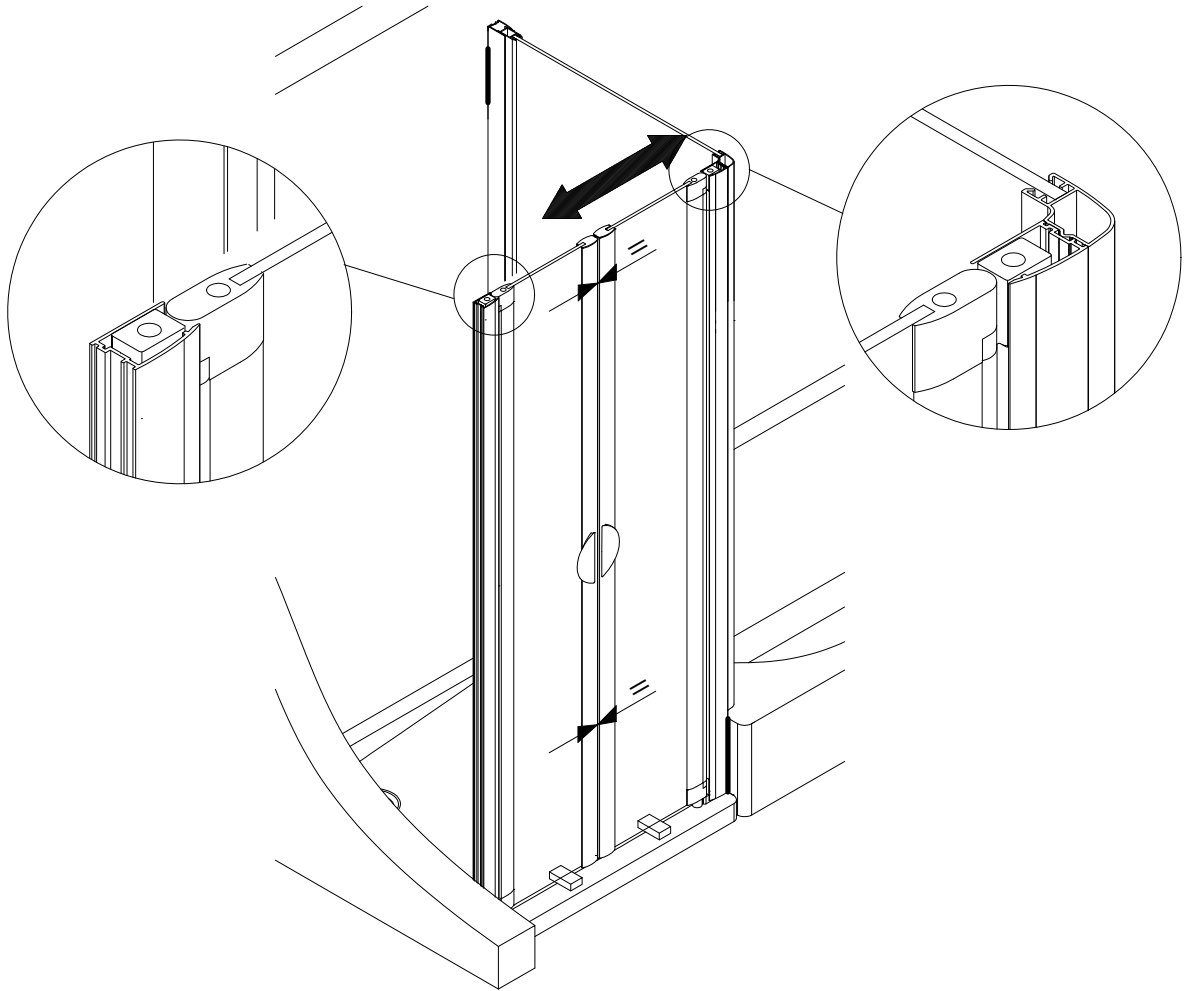
19



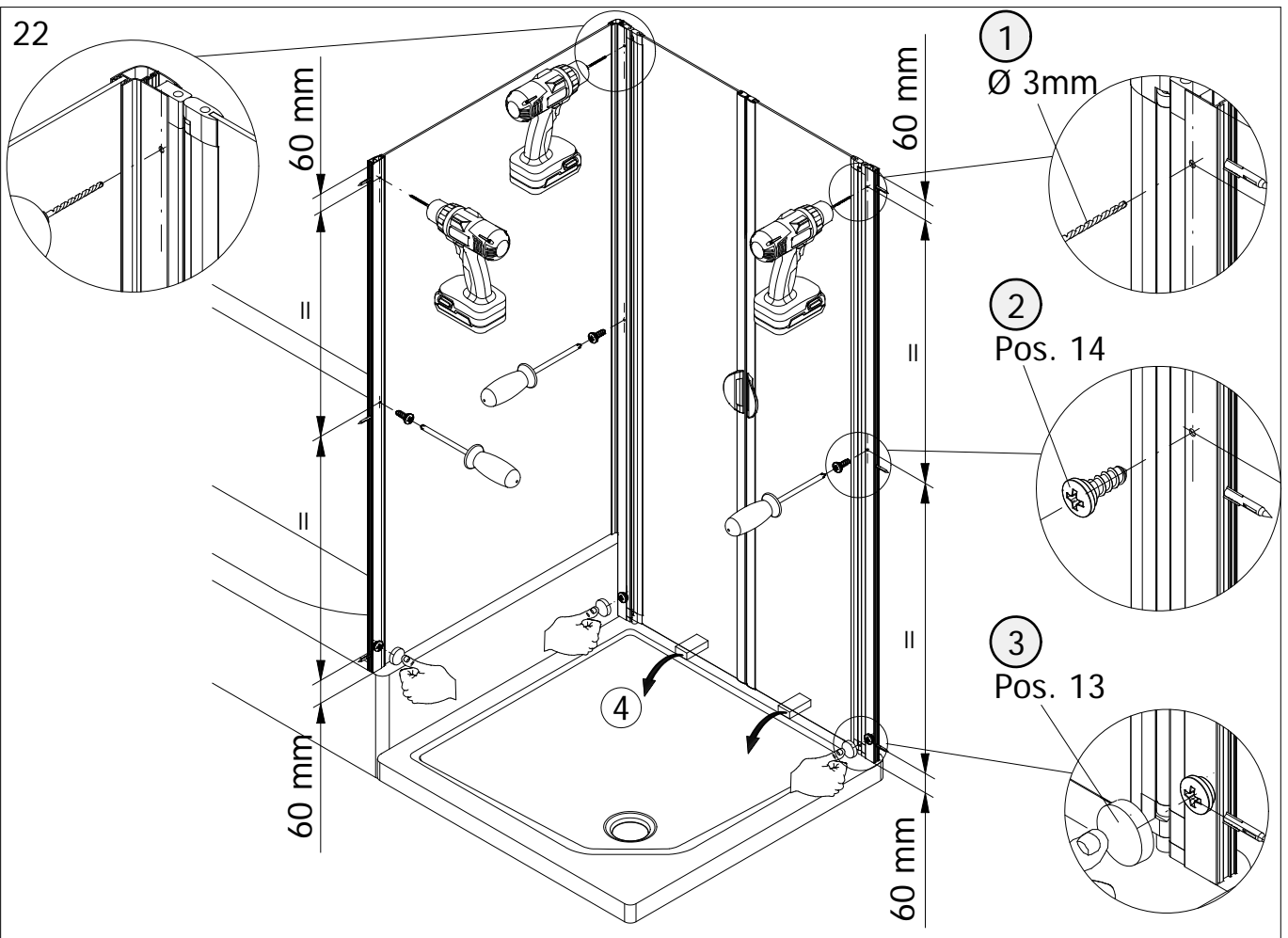
20

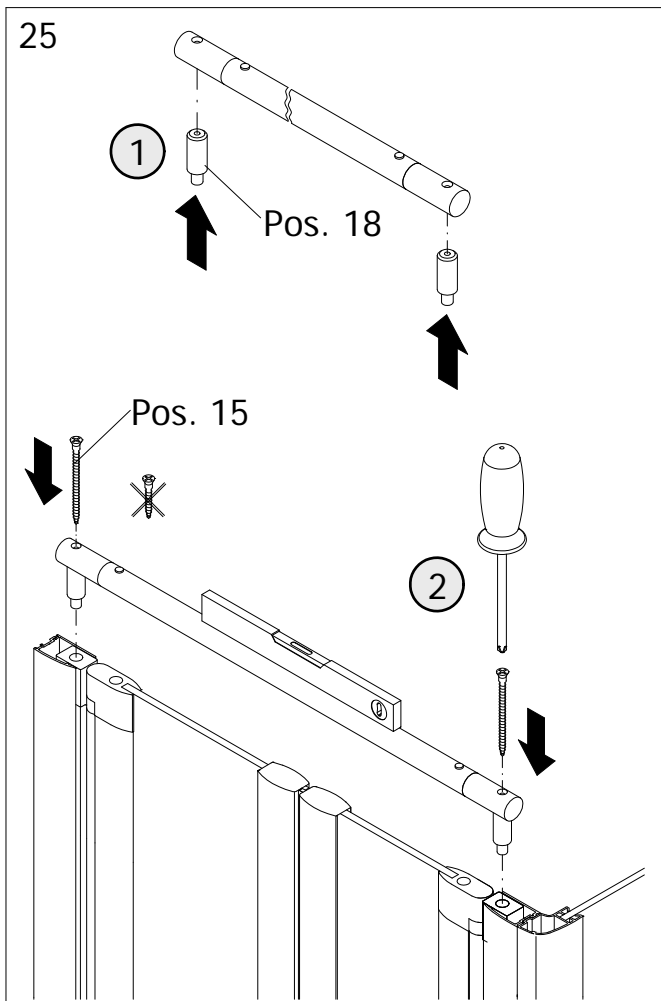
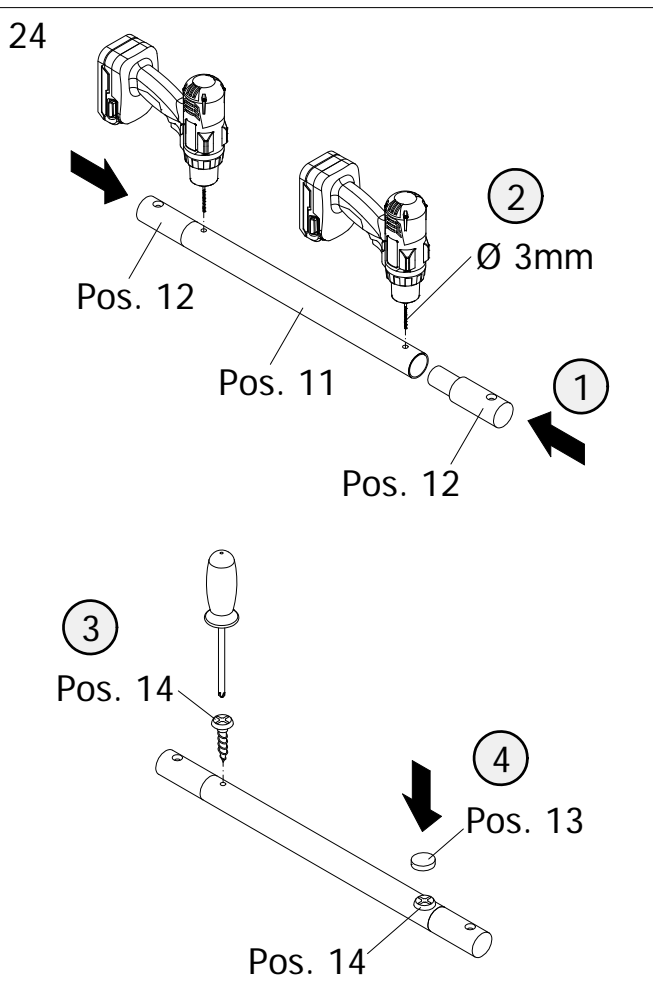
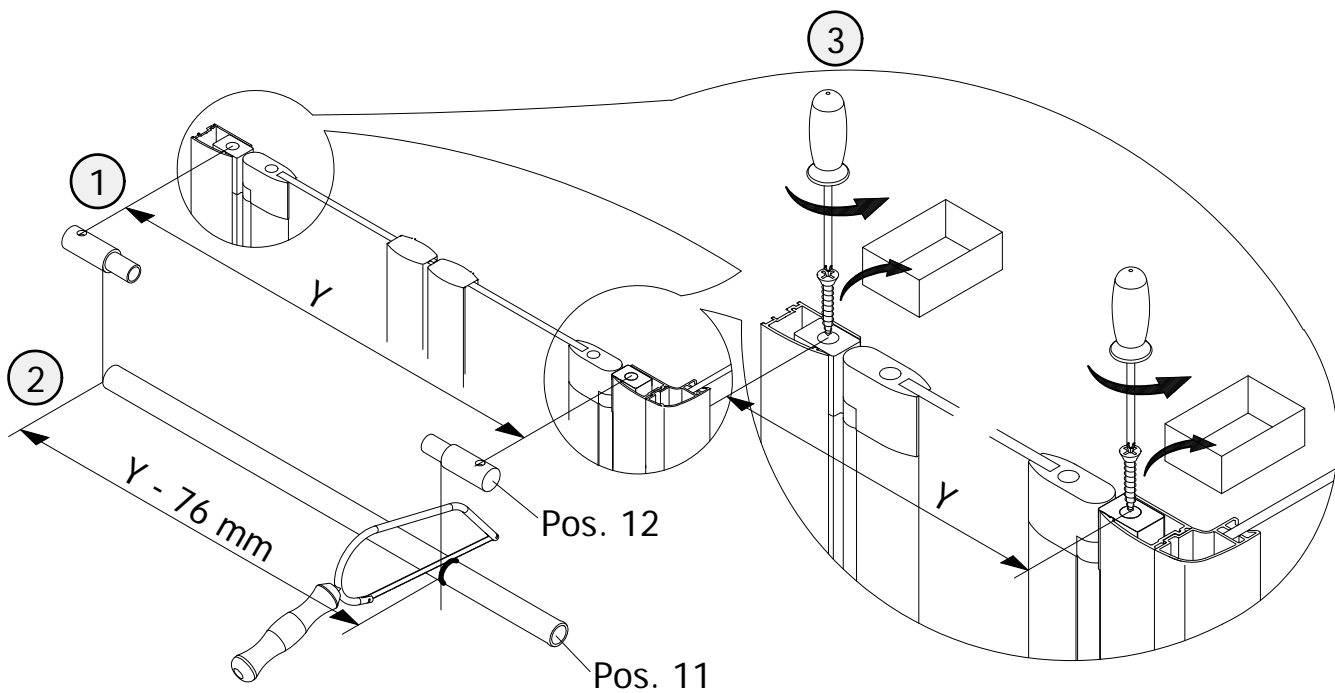


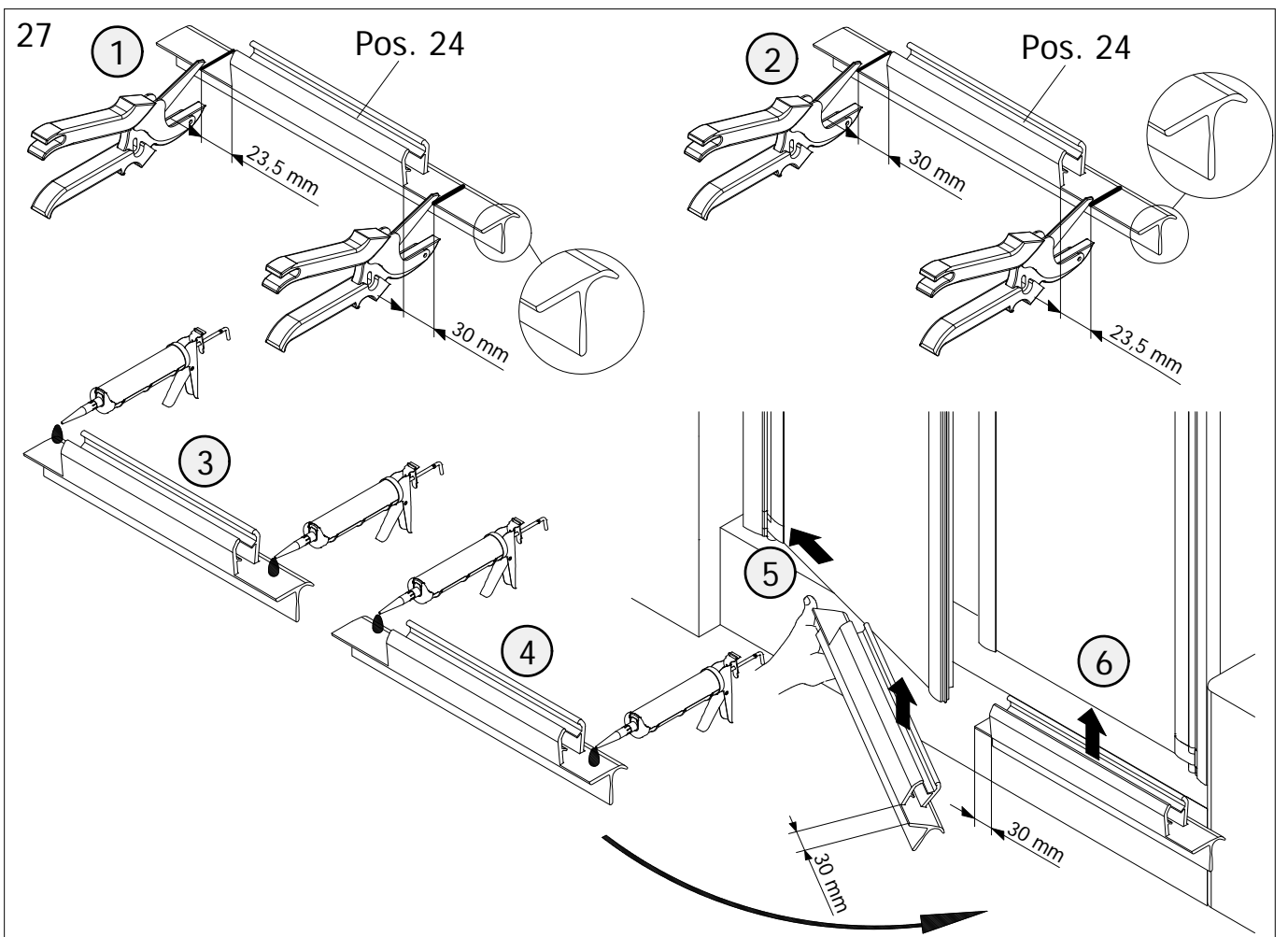
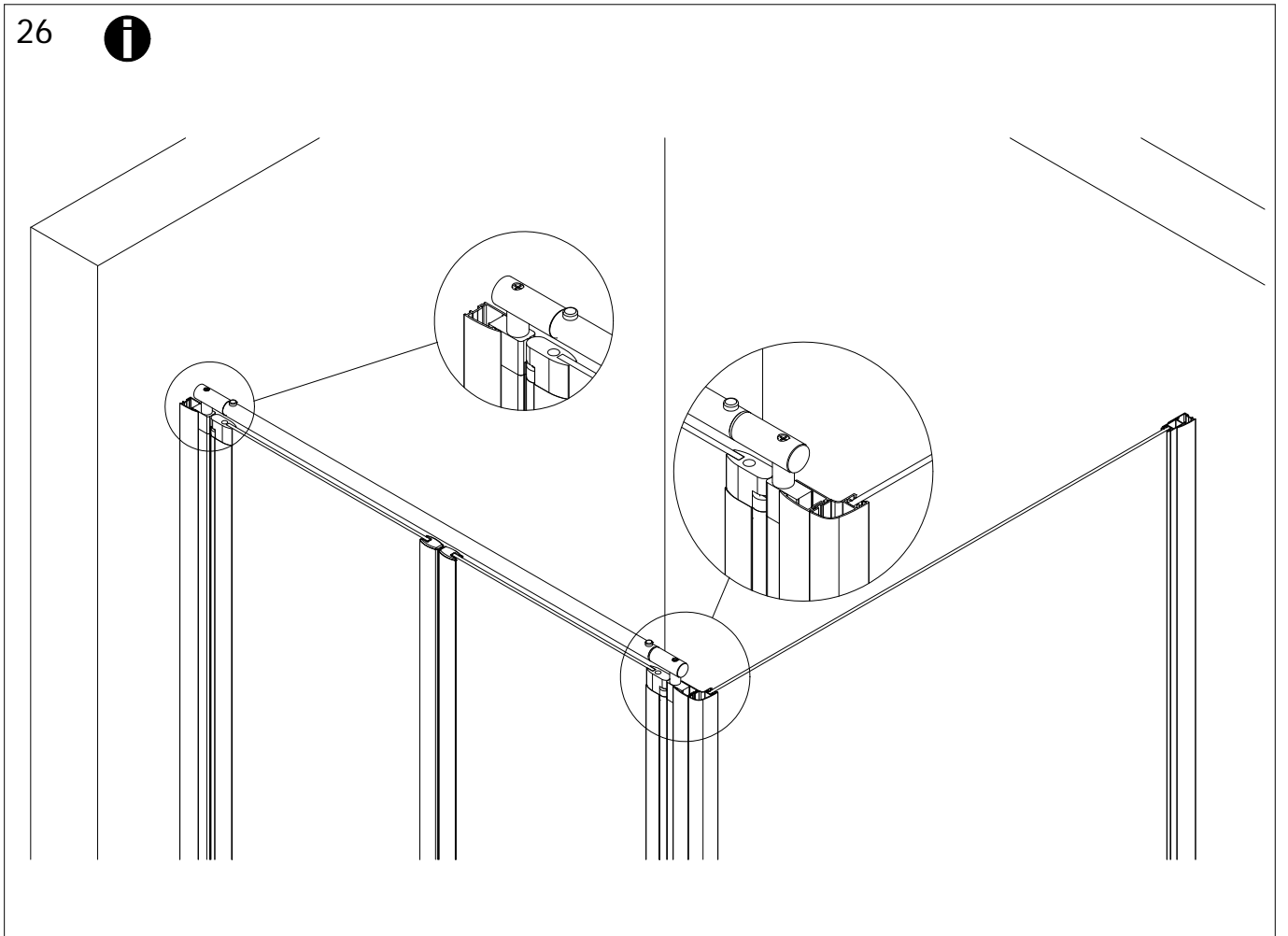
21

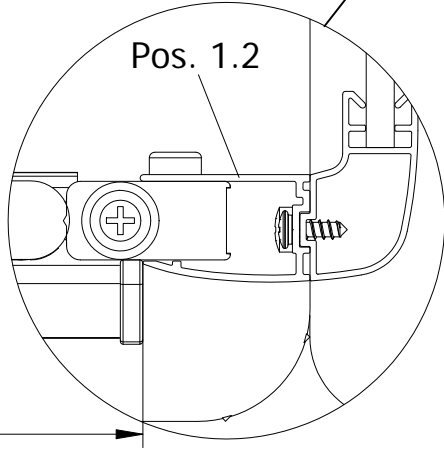
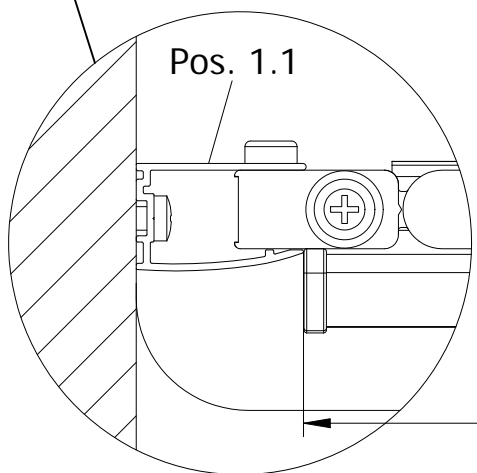
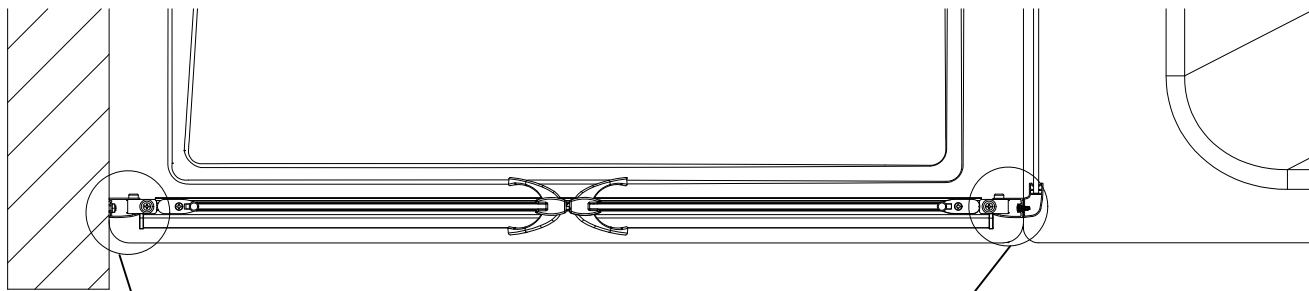


22

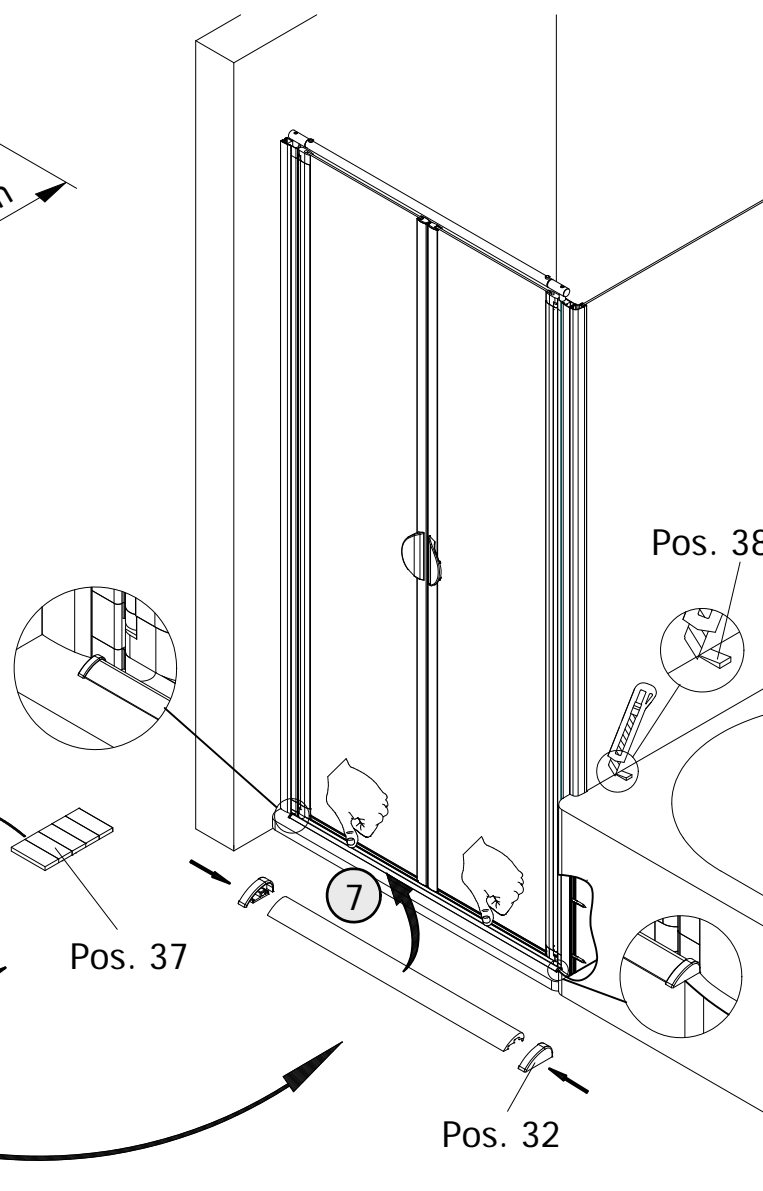
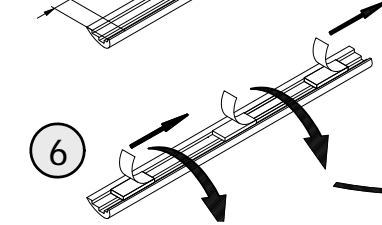
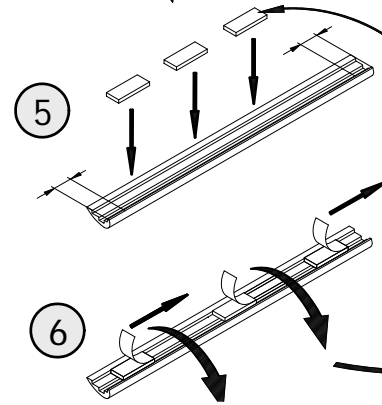
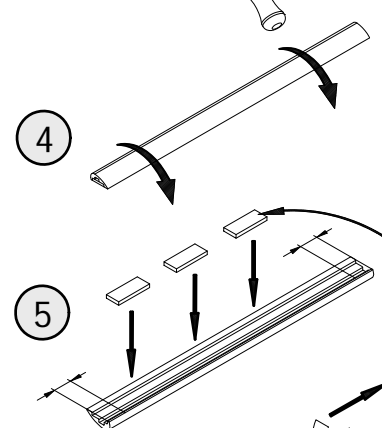
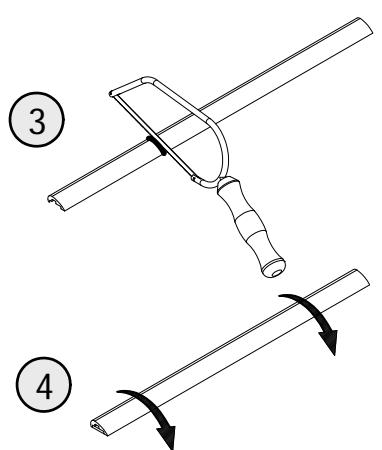
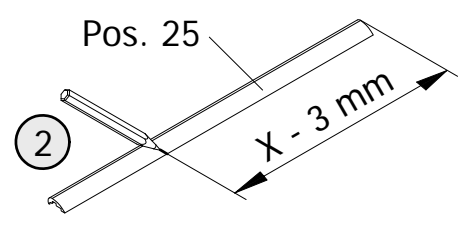


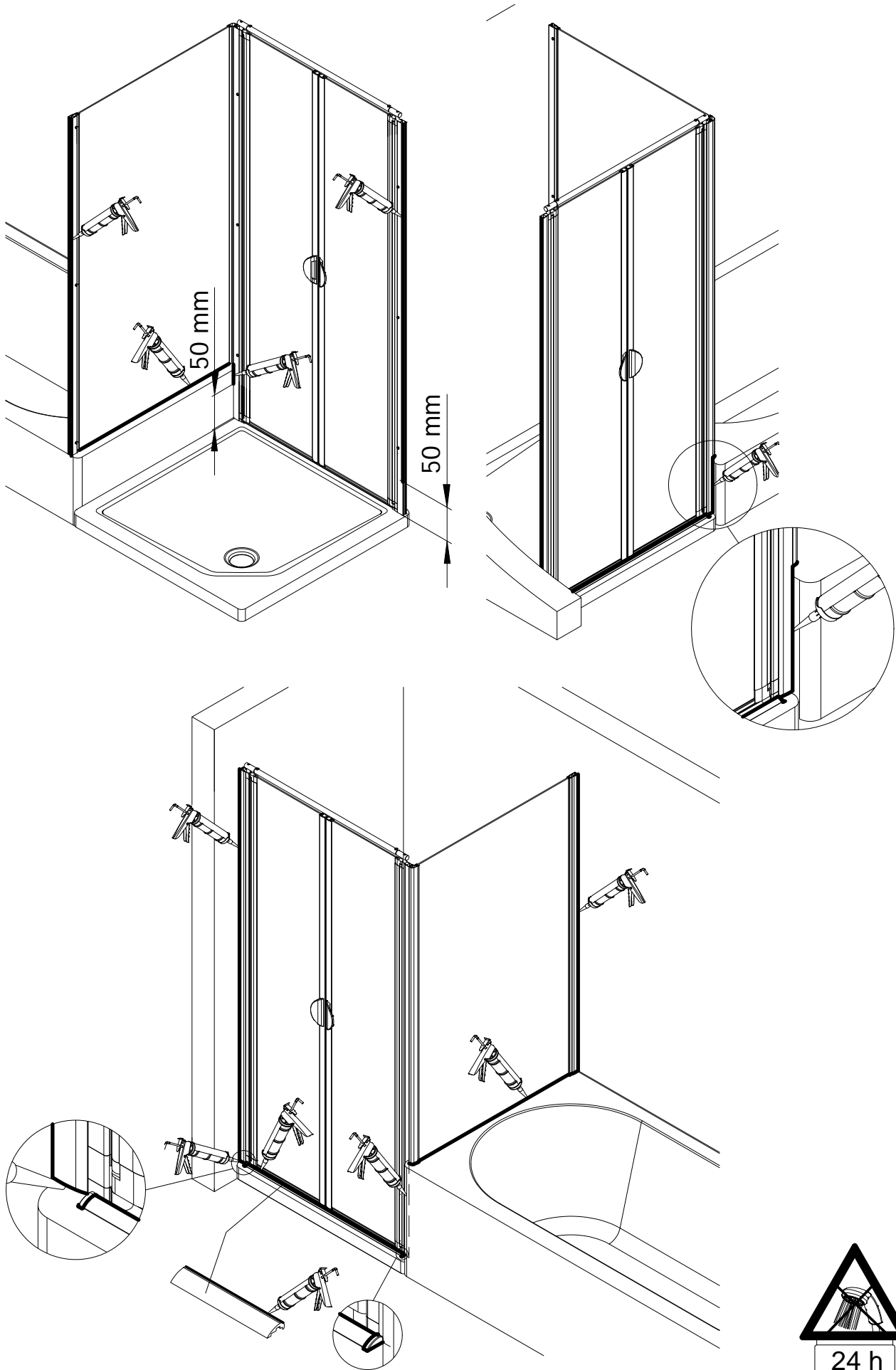




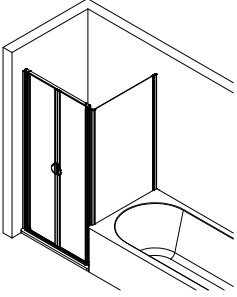


①
X





1678-1



Kontrollbeleg
Control Receipt

Prüfnummer/ Inspection number



Duschservice
Zum Hohlen Morgen 22
59939 Olsberg
Deutschland / Germany / Allemagne / Duitsland



Ersatzteilbestellung:
Fax 02962 / 972-4260



Allgemeine technische Probleme:
Telefon 02962 / 972-40



E-Mail:
ersatzteile@duschservice.de