

FAC112 / FAC343

SHOWER PLATE WITH LINEAR DRAIN

80X120CM

FAC113

SHOWER PLATE WITH LINEAR DRAIN

90X140CM

FAC344

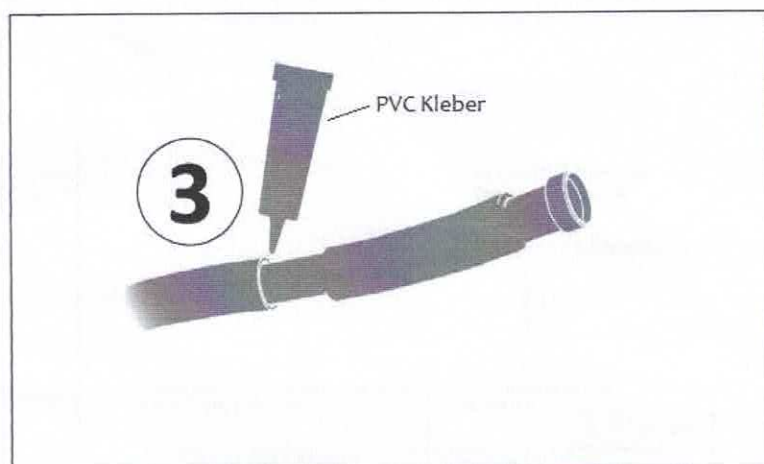
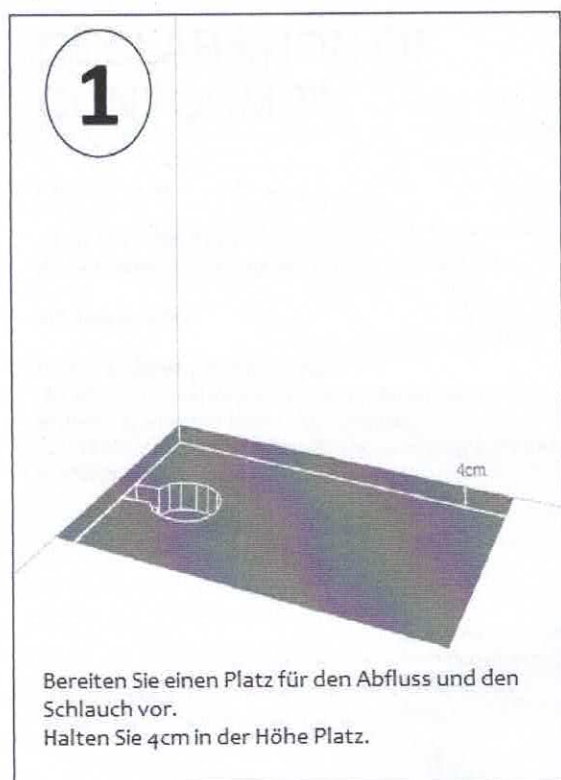
SHOWER PLATE WITH LINEAR DRAIN

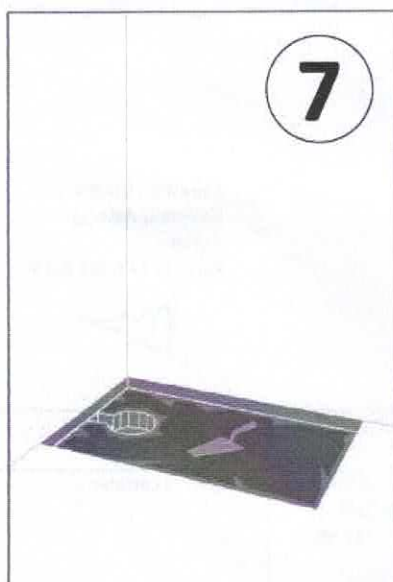
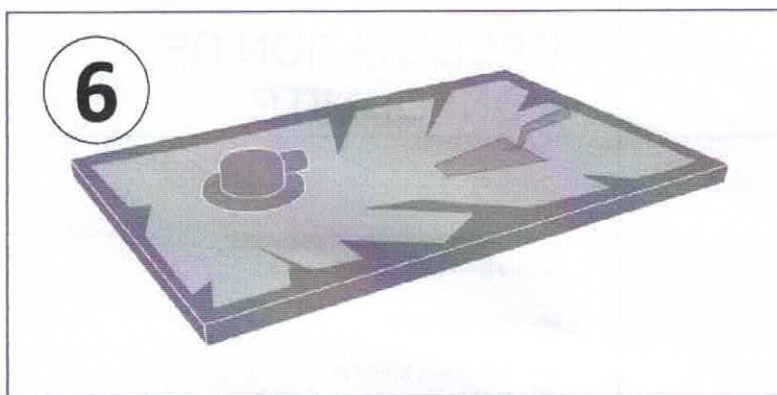
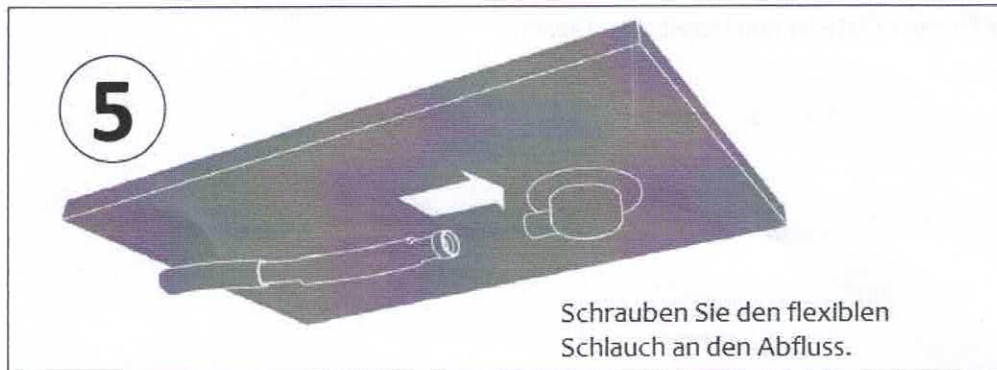
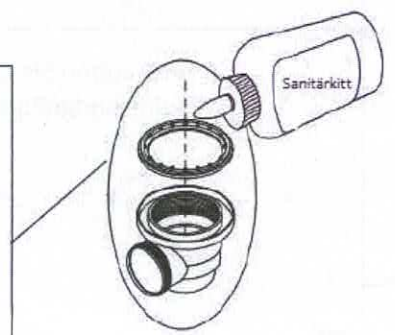
80X160CM

FAC385

SHOWER PLATE WITH LINEAR DRAIN

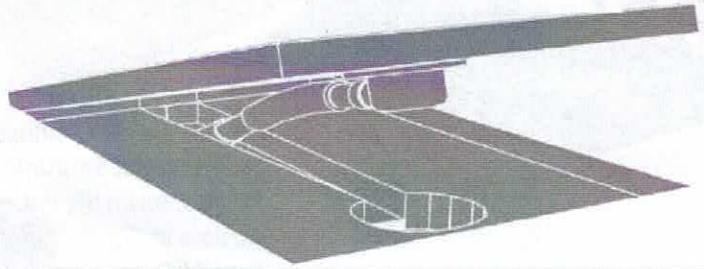
90X160CM





Schrauben Sie den Schlauch wieder auf die Drainage und bringen Sie den Abfluss in seine endgültige Position.

8



9

Ihre Shower Plate ist nun bereit zum Fliesen.

DE

DECLARATION OF CONFORMITY

We, Aurlane SA,

10 rue Clapeyron 75008 PARIS FRANCE

declare under its sole responsibility the conformity of:

XPS Shower plate

With the following norms :

- EN 13364 Thermal insulation products for buildings - Factory made extruded polystyrene foam (XPS) products
- EN 13501-1 Fire classification of construction products and building elements: Class E

Sebastien Doumenc
Associate Director
Aurlane
Paris, July 17th 2015

Model Number	Description
FAC053-FAC037-FAC112-FAC113-FAC033-FAC075 - FAC132 - FAC385 - FAC386 - FAC389	Shower plate

DECLARATION DE CONFORMITE

Aurlane SA,

10 rue Clapeyron 75008 PARIS FRANCE

déclare la conformité des produits :

Receveur à carrelé

avec les normes suivantes :

- EN 13164 Produits isolants thermiques pour le bâtiment - Produits manufacturés en mousse de polystyrène extrudé (XPS)
- EN 13501-1 Classement au feu des produits et éléments de construction: Classe E

Sebastien Doumenc
Directeur Associé
Aurlane
Paris, le 17 juillet 2015

Référence du modèle	Description
FAC053-FAC037-FAC112-FAC113-FAC033-FAC075 - FAC132 - FAC385 - FAC386 - FAC389	Receveur à carrelé