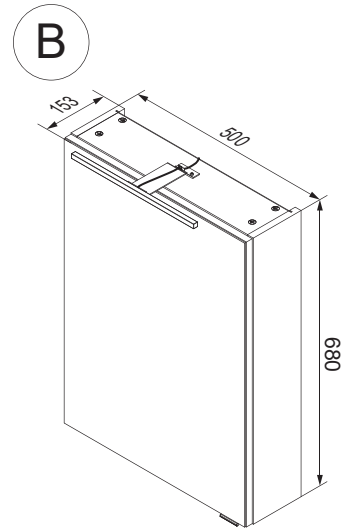
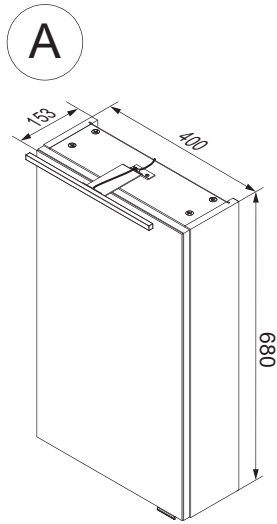
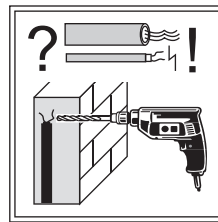
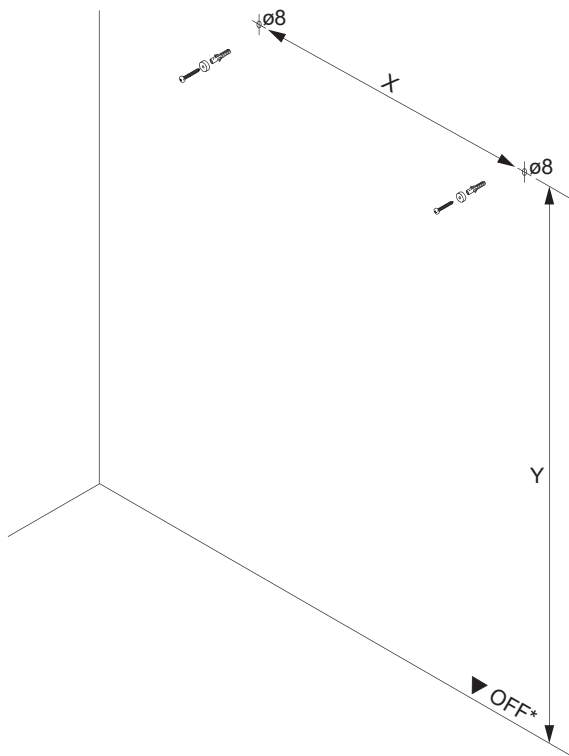
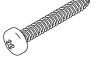




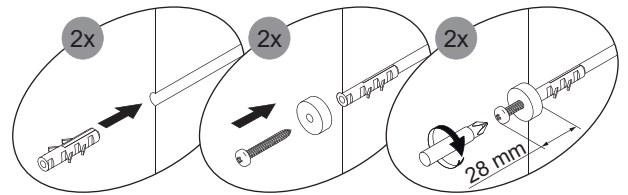
! Alle Maße sind in Millimetern angegeben, unverbindlich, vor Ort zu prüfen und stellen nur eine Empfehlung dar. Änderungen vorbehalten.
 All dimensions are given in millimeters, without obligation, to be checked on site and represent only a recommendation. Subject to change.



1

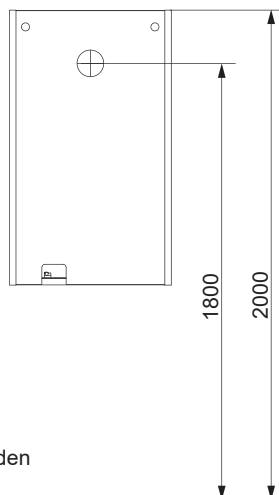


| | | |
|---|---|---|
|  |  |  |
| 5x60mm 4RK5.0X601 | 4BB8430003 | Ø8 4BD8000000 |
| 2 x | 2 x | 2 x |

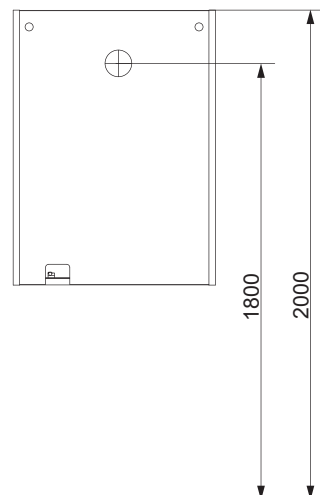


| Schrank cabinet | X in mm | Y in mm |
|-----------------|---------|---------|
| A | 320 | 1960 |
| B | 420 | 1960 |

A



B

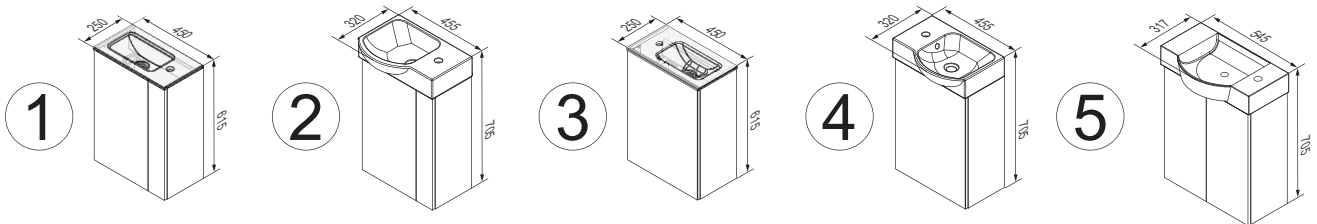


Ansicht von hinten
View from the back

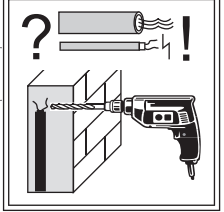
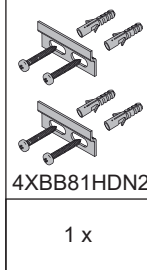
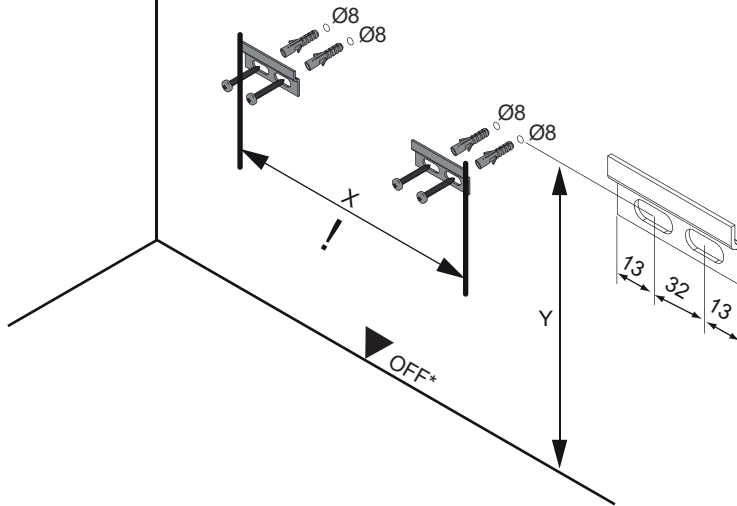
*OFF = Oberkante fertiger Fußboden
*OFF = Top edge of finished floor



! Alle Maße sind in Millimetern angegeben, unverbindlich, vor Ort zu prüfen und stellen nur eine Empfehlung dar. Änderungen vorbehalten.
 All dimensions are given in millimeters, without obligation, to be checked on site and represent only a recommendation. Subject to change.



1

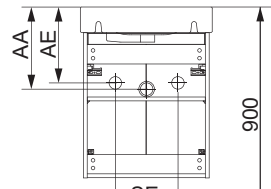
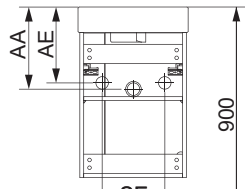
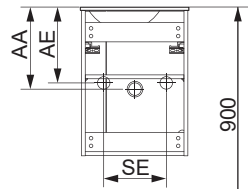


| Becken / washbasin | Schrank / cupboard | X (mm) | Y (mm) |
|--------------------|--------------------|--------|--------|
| A | 1 / 3 | 406 | 720 |
| B | 2 / 4 | 406 | 635 |
| C | 5 | 485 | 635 |

A

B

C



Ansicht von hinten
View from the back

OFF*

| Washbecken | AA | AE | SE | Siphon |
|--------------|-----------|-----------|-----------|-------------------------|
| A | 200 - 240 | 170 - 210 | 150 - 210 | Bei Standard-Siphon |
| B | 290 | 260 | 150 - 260 | Bei Standard-Siphon |
| C | 290 | 260 | 150 - 260 | Bei Standard-Siphon |

AE = Abstand Eckventile
Distance corner valves

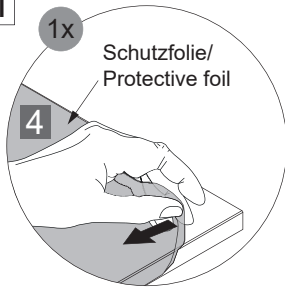
AA = Abstand Ablauf
Distance drain

SE = Seitlicher Abstand Eckventile
Lateral distance corner valves

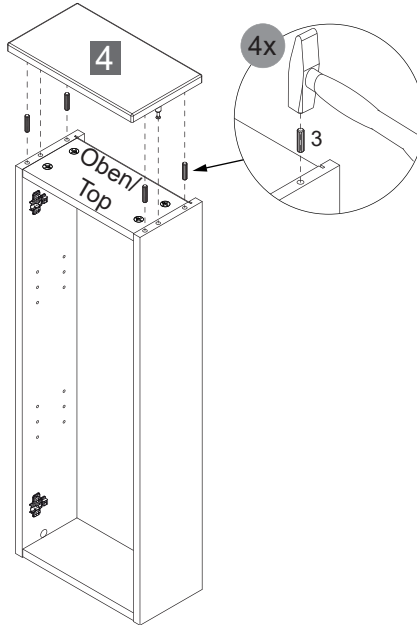
OFF = Oberkante fertiger Fußboden
Top edge of finished floor

5

5.1



5.2

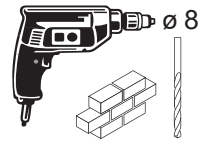
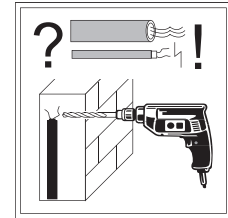
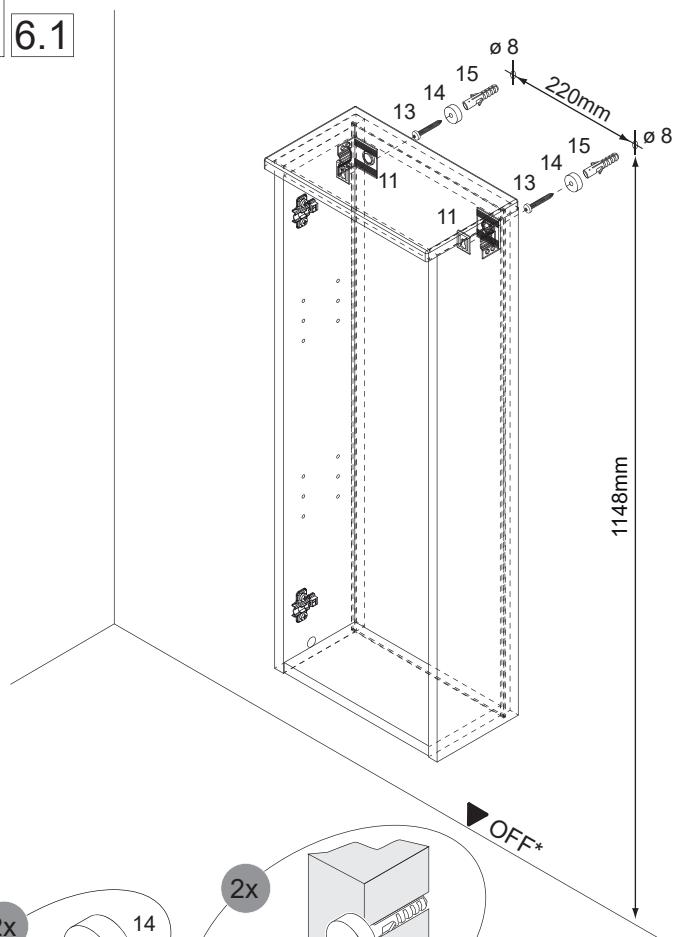


5.3

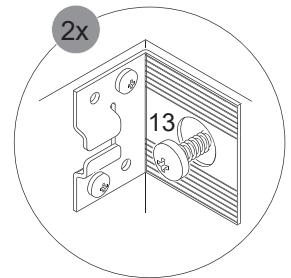
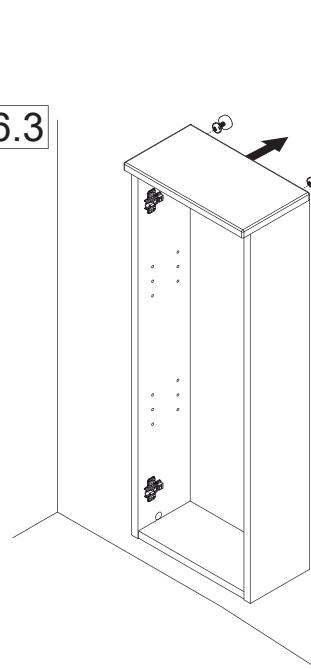


6

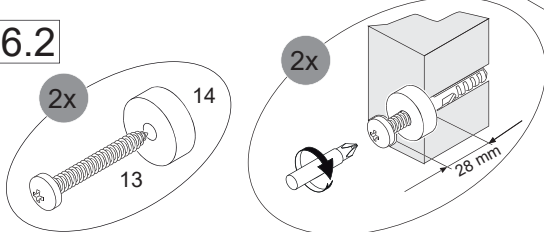
6.1



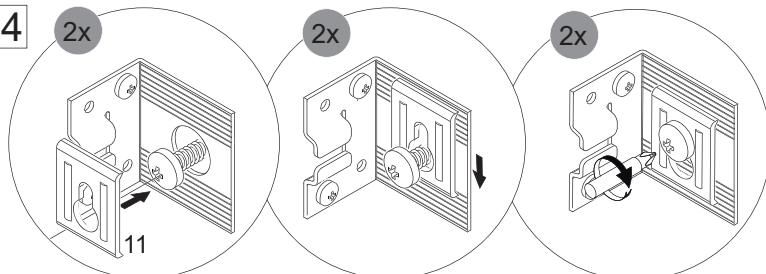
6.3



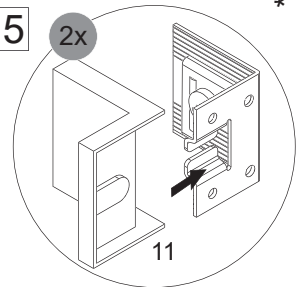
6.2



6.4



6.5



Abstandsmaß vor Ort prüfen!
Check the distance on site!

*OFF = Oberkante fertiger Fußboden
*OFF = Top edge of finished floor

